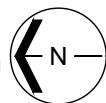


BASE FLOOR PLAN

Western Washington University (WWU) makes these documents available on an "as is" basis. All warranties and representations of any kind with regard to said documents are disclaimed, including the implied warranties of merchantability and fitness for a particular use. WWU does not warrant the documents against deficiencies of any kind.



TRUE NORTH

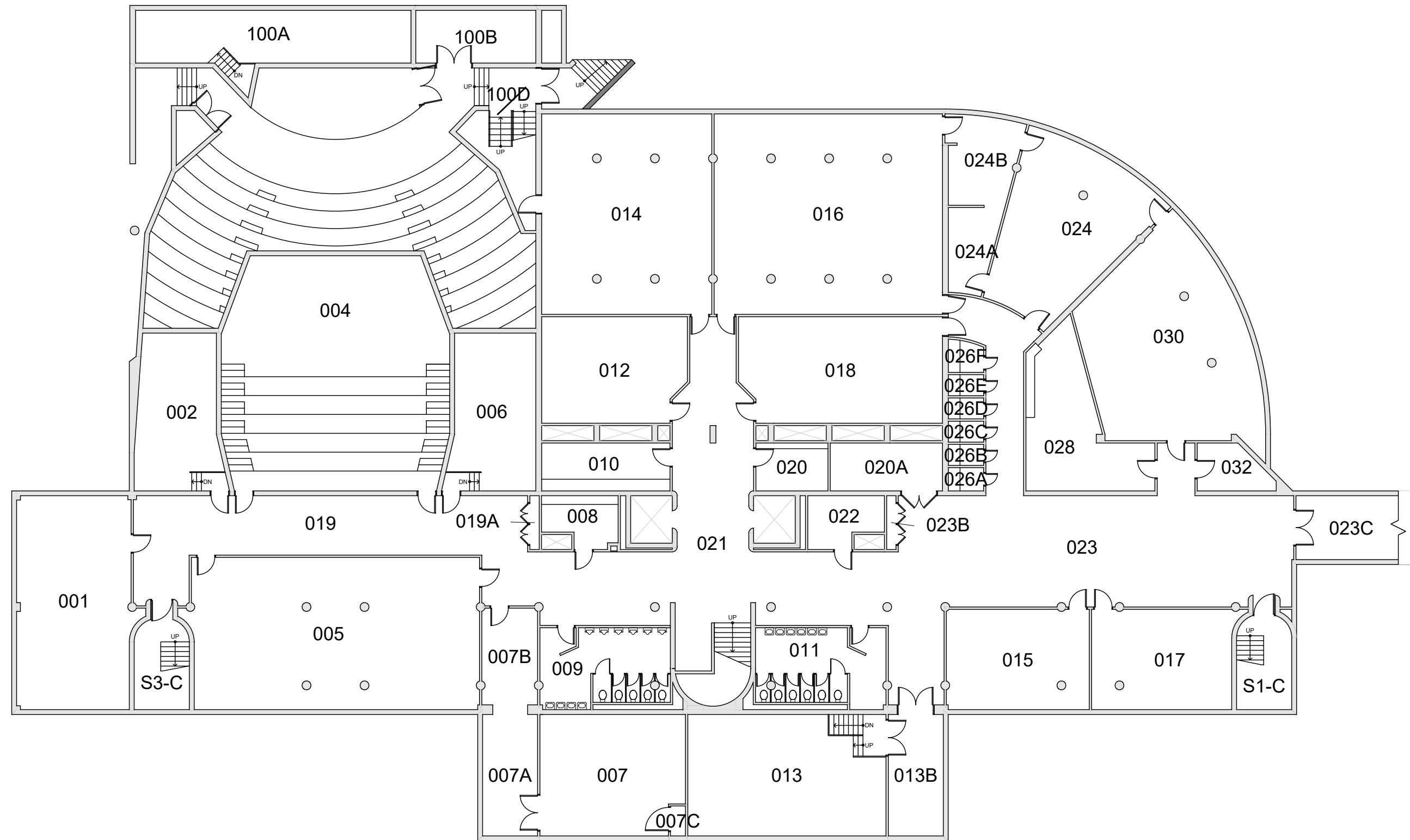


Last Drawing Revision: 02/14/2022

ARNTZEN HALL
BASEMENT

Last Sync With AIM: 02/14/2022

Building	AH
Floor #	B

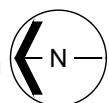


BASE FLOOR PLAN

Western Washington University (WWU) makes these documents available on an "as is" basis. All warranties and representations of any kind with regard to said documents are disclaimed, including the implied warranties of merchantability and fitness for a particular use. WWU does not warrant the documents against deficiencies of any kind.



TRUE NORTH

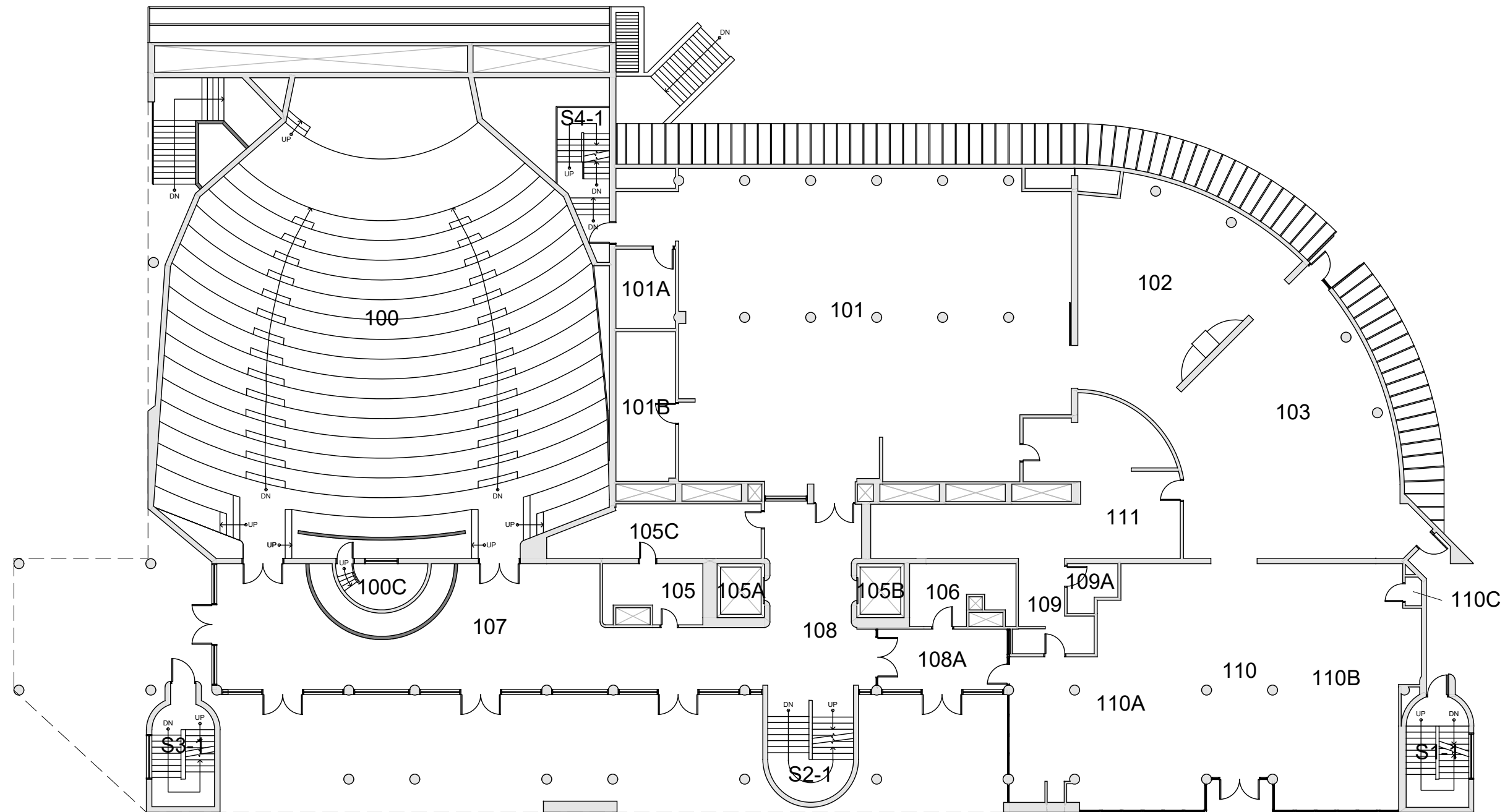


Last Drawing Revision: 02/14/2022

ARNTZEN HALL
CONCOURSE

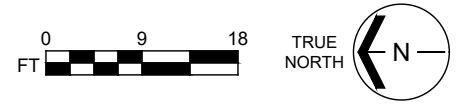
Last Sync With AIM: 02/14/2022

Building	AH
Floor #	C

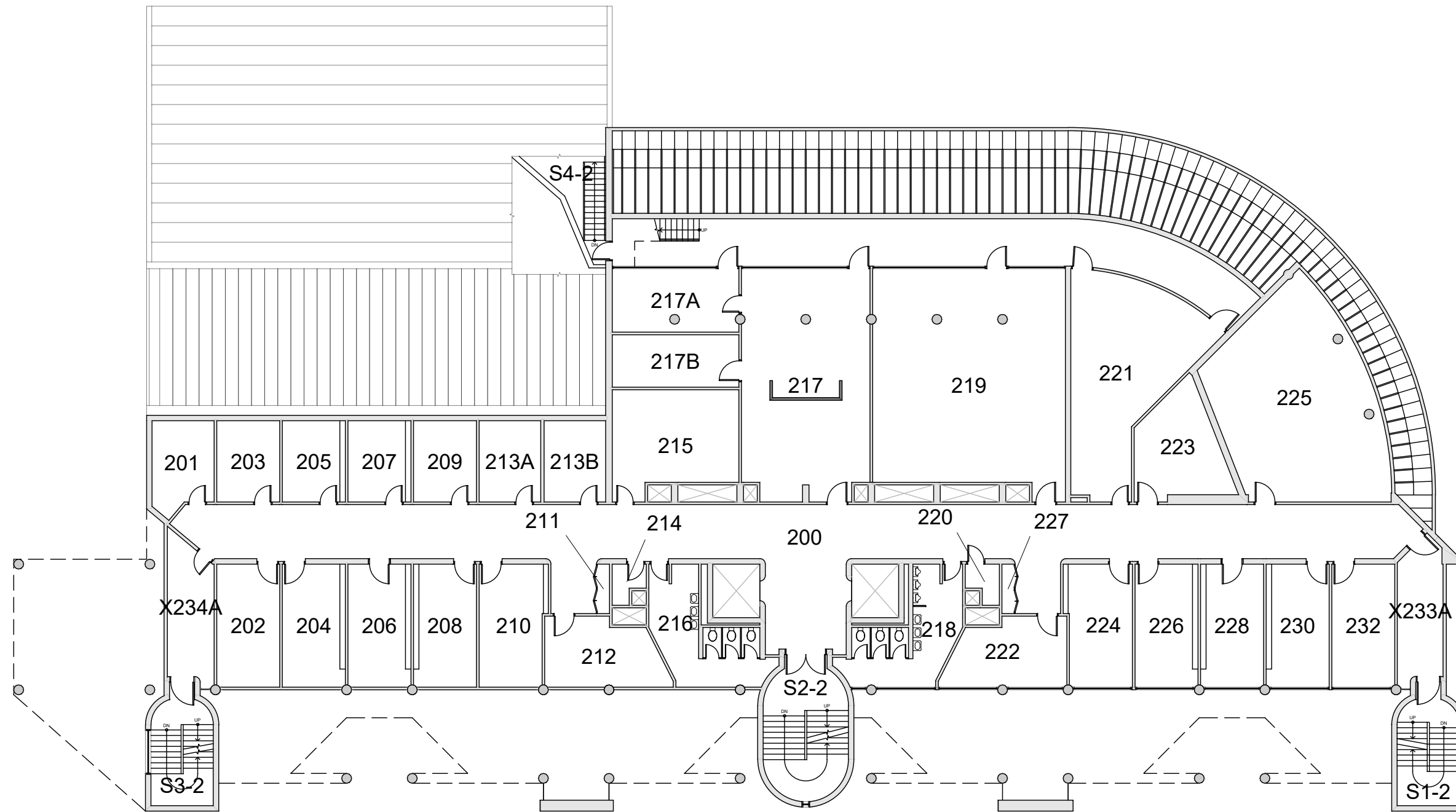


BASE FLOOR PLAN

Western Washington University (WWU) makes these documents available on an "as is" basis. All warranties and representations of any kind with regard to said documents are disclaimed, including the implied warranties of merchantability and fitness for a particular use. WWU does not warrant the documents against deficiencies of any kind.



<p>ARNTZEN HALL FLOOR 1</p>		<p>Building AH</p> <p>Floor # 1</p>
<p>Last Drawing Revision: 02/14/2022</p>		<p>Last Sync With AIM: 02/14/2022</p>



BASE FLOOR PLAN

Western Washington University (WWU) makes these documents available on an "as is" basis. All warranties and representations of any kind with regard to said documents are disclaimed, including the implied warranties of merchantability and fitness for a particular use. WWU does not warrant the documents against deficiencies of any kind.



TRUE NORTH

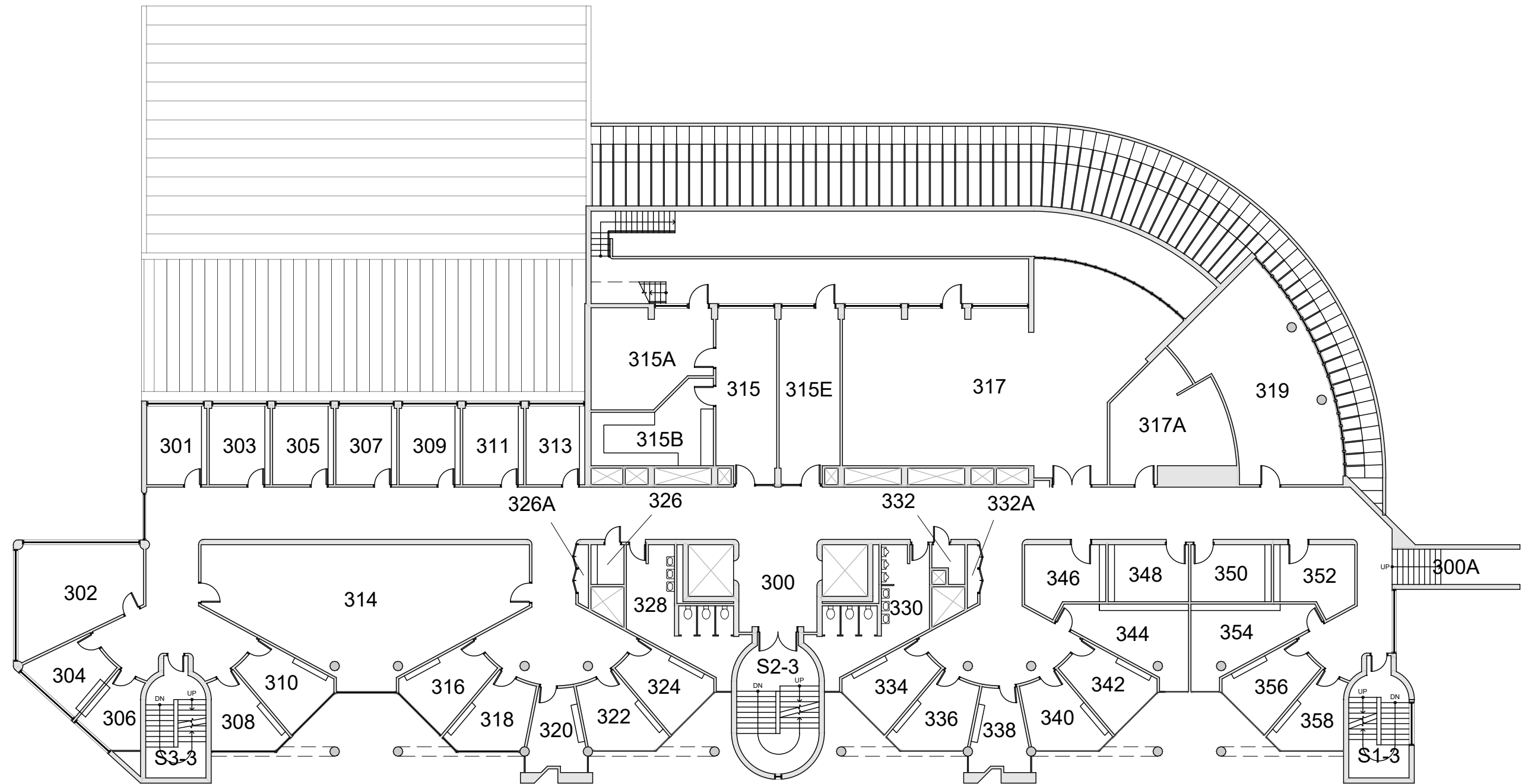


Last Drawing Revision: 02/14/2022

ARNTZEN HALL
FLOOR 2

Last Sync With AIM: 02/14/2022

Building	AH
Floor #	2



BASE FLOOR PLAN

Western Washington University (WWU) makes these documents available on an "as is" basis. All warranties and representations of any kind with regard to said documents are disclaimed, including the implied warranties of merchantability and fitness for a particular use. WWU does not warrant the documents against deficiencies of any kind.



TRUE NORTH

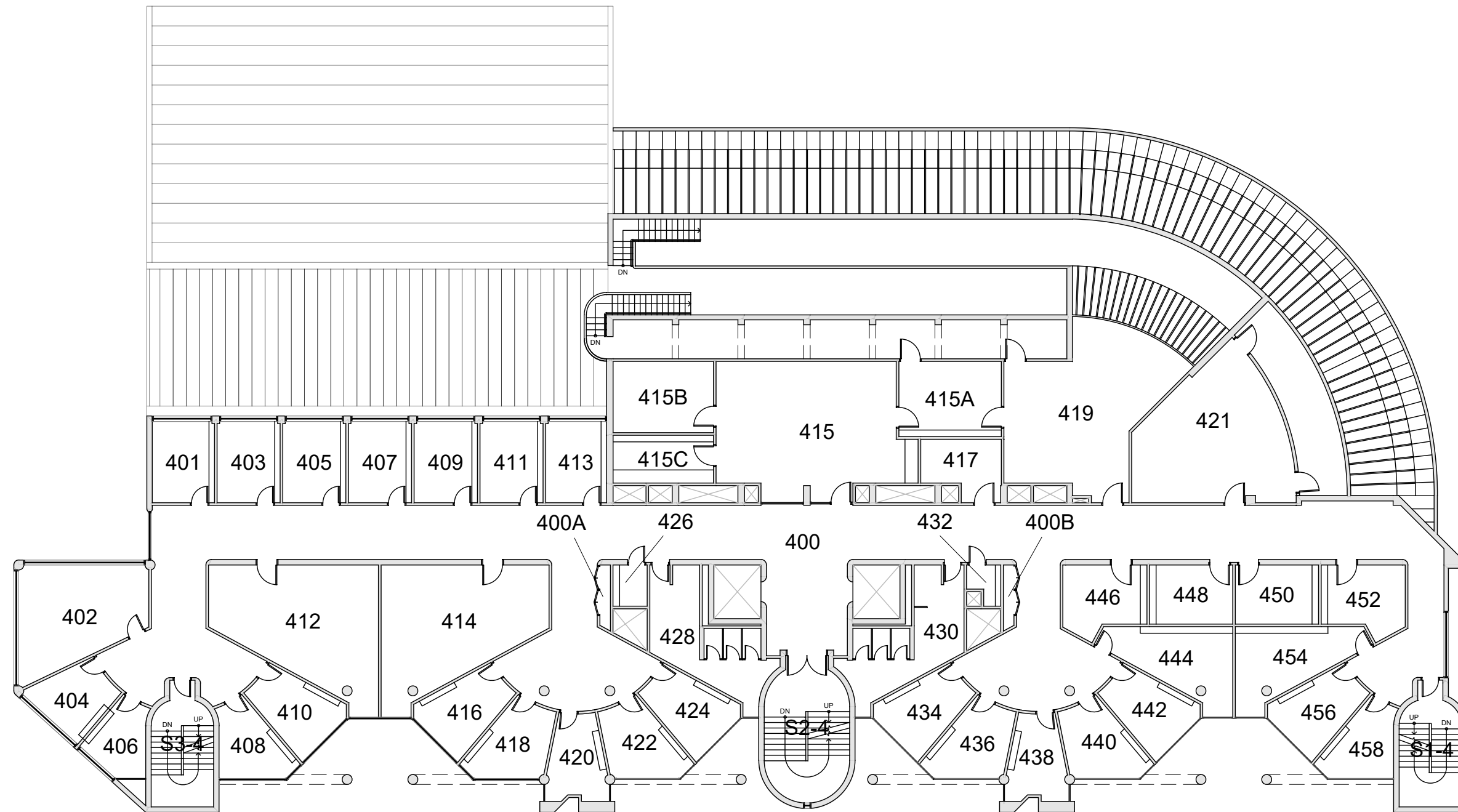


Last Drawing Revision: 02/14/2022

ARNTZEN HALL
FLOOR 3

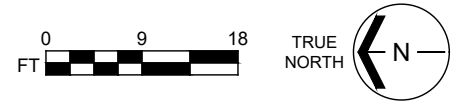
Last Sync With AIM: 02/14/2022

Building	AH
Floor #	3

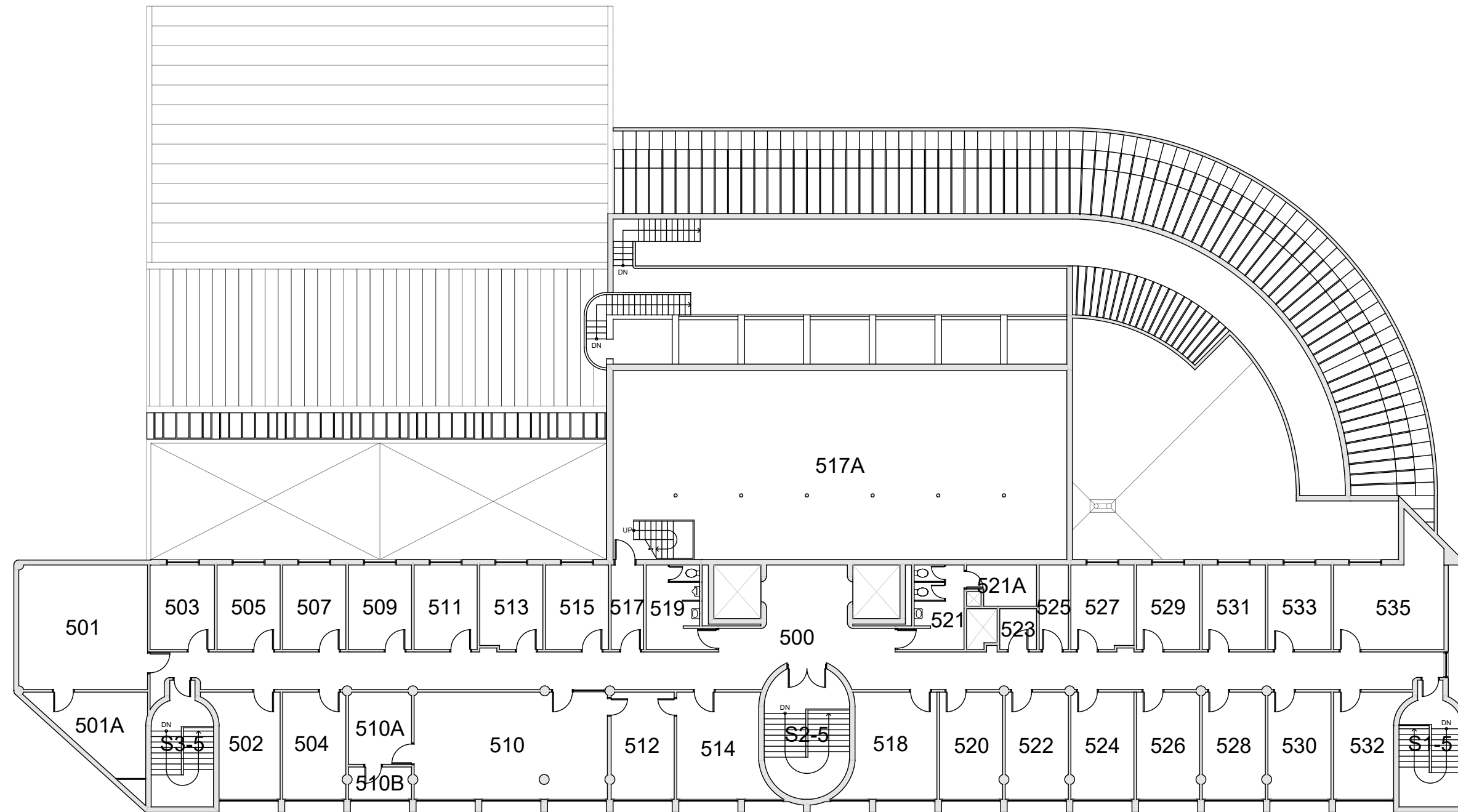


BASE FLOOR PLAN

Western Washington University (WWU) makes these documents available on an "as is" basis. All warranties and representations of any kind with regard to said documents are disclaimed, including the implied warranties of merchantability and fitness for a particular use. WWU does not warrant the documents against deficiencies of any kind.



<p>ARNTZEN HALL FLOOR 4</p>		<p>Building AH Floor # 4</p>
<p>Last Drawing Revision: 02/14/2022</p>		<p>Last Sync With AIM: 02/14/2022</p>



BASE FLOOR PLAN

Western Washington University (WWU) makes these documents available on an "as is" basis. All warranties and representations of any kind with regard to said documents are disclaimed, including the implied warranties of merchantability and fitness for a particular use. WWU does not warrant the documents against deficiencies of any kind.



TRUE NORTH

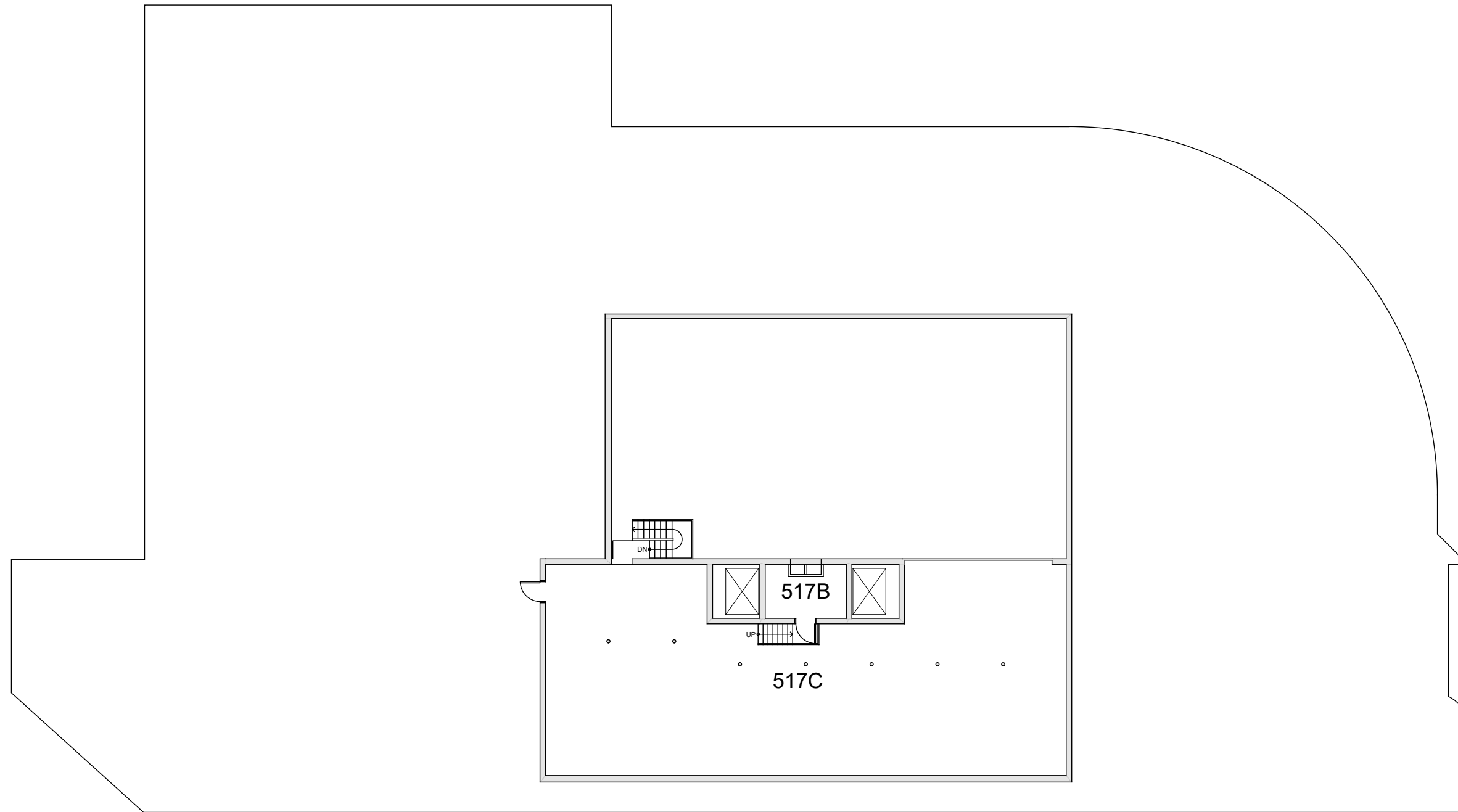


Last Drawing Revision: 02/14/2022

ARNTZEN HALL
FLOOR 5

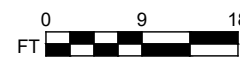
Last Sync With AIM: 02/14/2022

Building **AH**
Floor # **5**



BASE FLOOR PLAN

Western Washington University (WWU) makes these documents available on an "as is" basis. All warranties and representations of any kind with regard to said documents are disclaimed, including the implied warranties of merchantability and fitness for a particular use. WWU does not warrant the documents against deficiencies of any kind.



Last Drawing Revision: 02/14/2022

ARNTZEN HALL
PENTHOUSE

Last Sync With AIM: 02/14/2022

Building	AH
Floor #	5M