

Western Washington University (WWU) makes these documents available on an "as is" basis. All warranties and representations of any kind with regard to said documents are disclaimed, including the implied warranties of merchantability and fitness for a particular use. WWU does not warrant the documents against deficiencies of any kind.



TRUE NORTH



Date Revised: 03/11/2016

## ALUMNI HOUSE BASEMENT

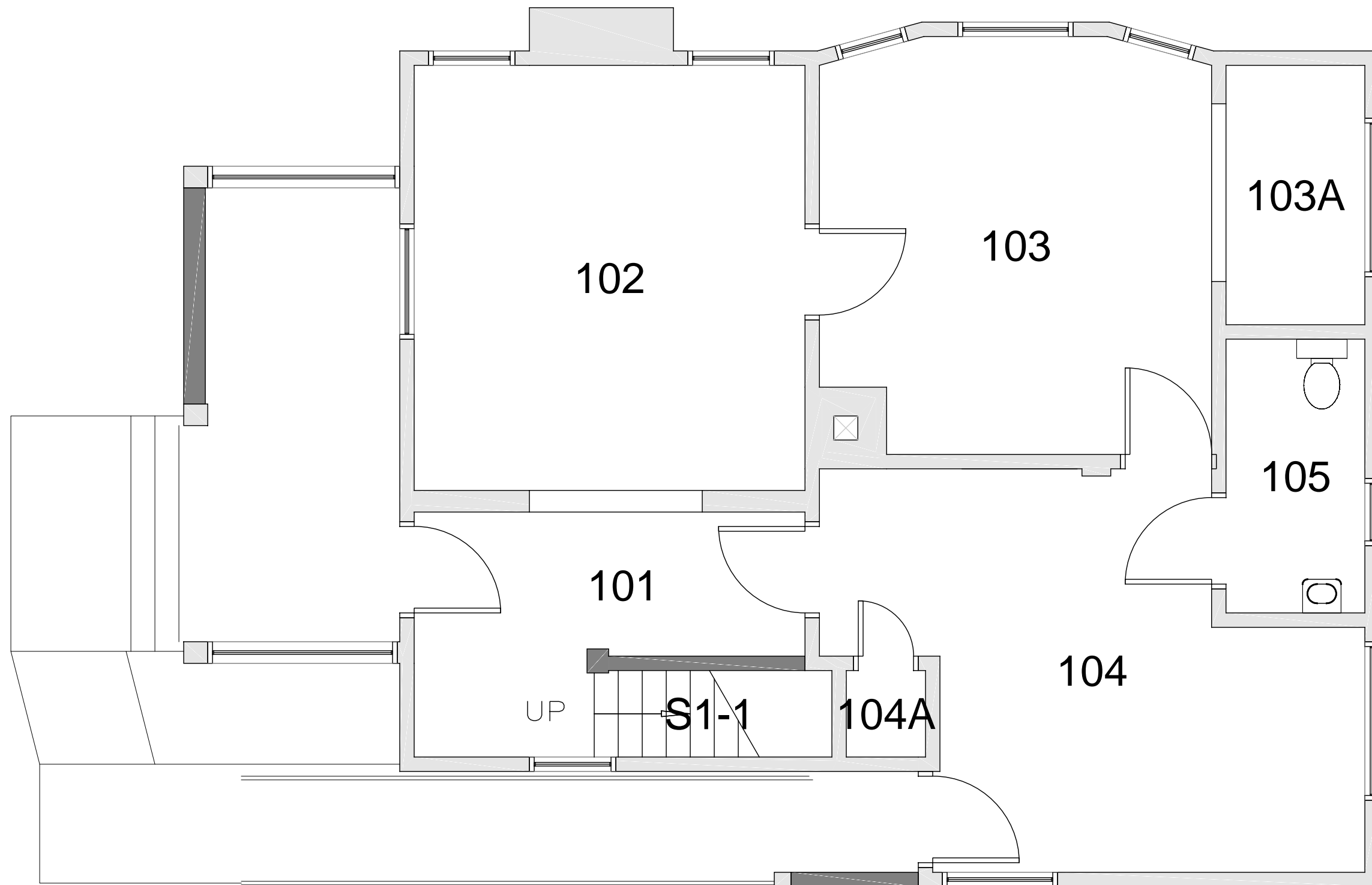
Last Sync With FAMIS: 12/22/2015

Building/Zone

AL

Floor #

B



Western Washington University (WWU) makes these documents available on an "as is" basis. All warranties and representations of any kind with regard to said documents are disclaimed, including the implied warranties of merchantability and fitness for a particular use. WWU does not warrant the documents against deficiencies of any kind.



TRUE NORTH



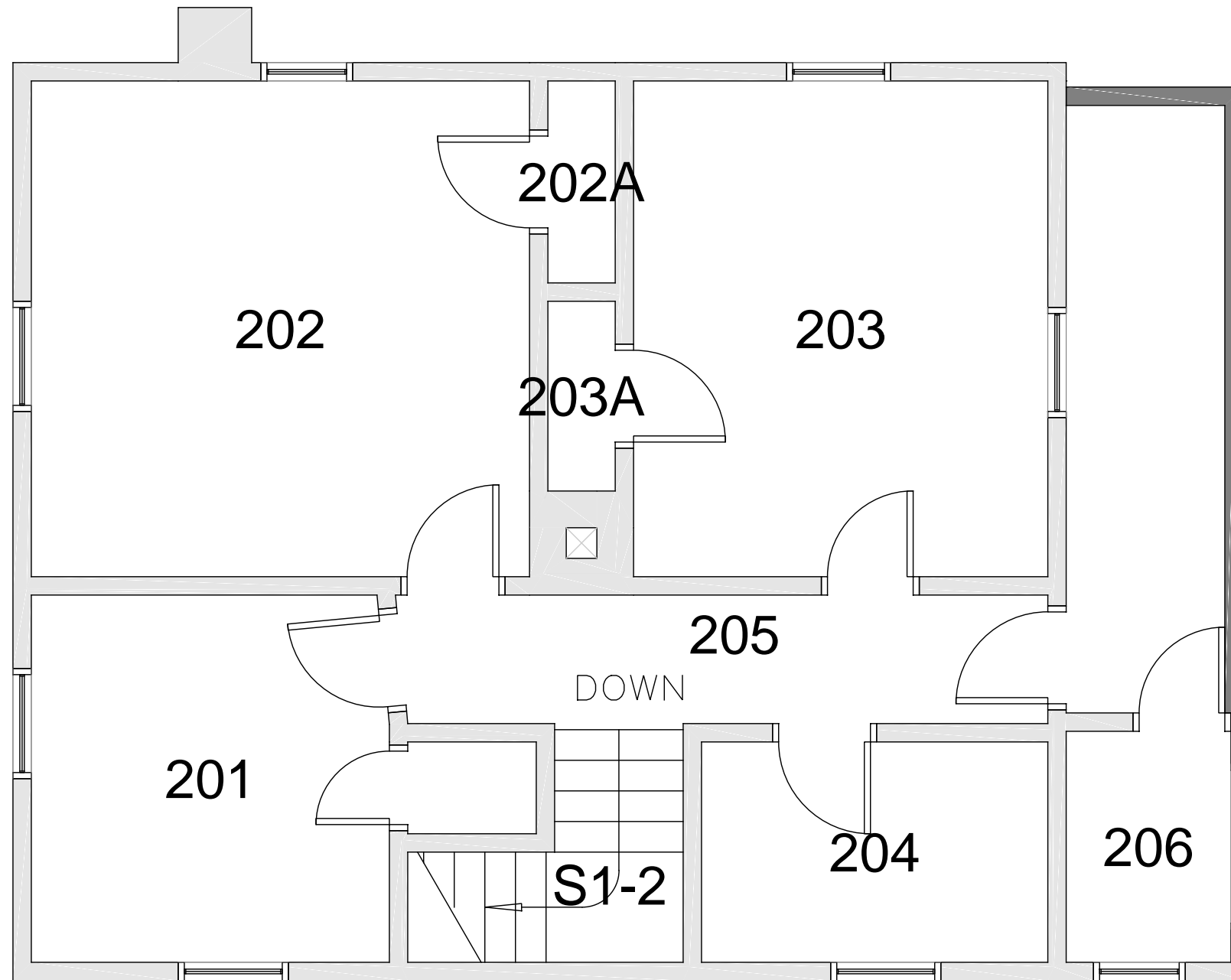
Date Revised: 03/11/2016

# ALUMNI HOUSE

FLOOR 1

Last Sync With FAMIS: 12/22/2015

Building/Zone	AL
Floor #	1



Western Washington University (WWU) makes these documents available on an "as is" basis. All warranties and representations of any kind with regard to said documents are disclaimed, including the implied warranties of merchantability and fitness for a particular use. WWU does not warrant the documents against deficiencies of any kind.



TRUE NORTH



Date Revised: 03/11/2016

# ALUMNI HOUSE

FLOOR 2

Last Sync With FAMIS: 12/22/2015

Building/Zone	AL
Floor #	2