

BASE FLOOR PLAN

Western Washington University (WWU) makes these documents available on an "as is" basis. All warranties and representations of any kind with regard to said documents are disclaimed, including the implied warranties of merchantability and fitness for a particular use. WWU does not warrant the documents against deficiencies of any kind.



TRUE NORTH

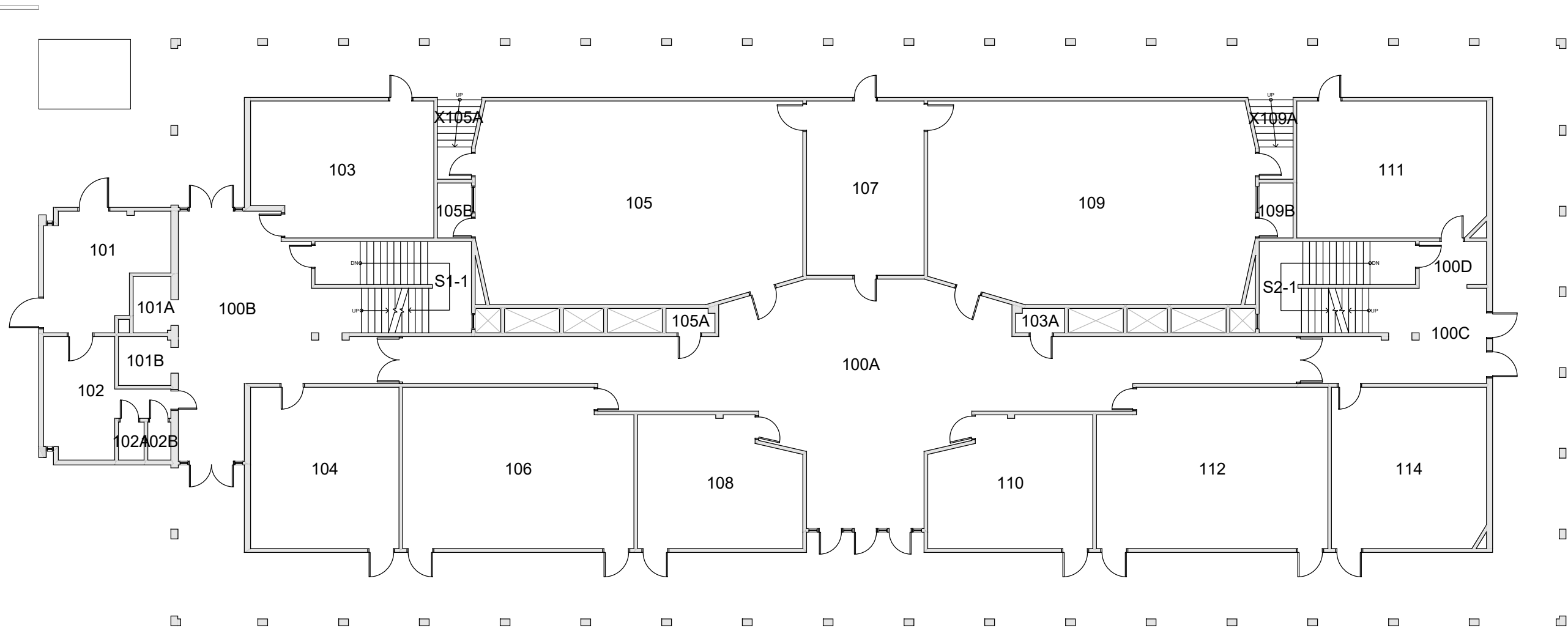


Last Drawing Revision: 04/17/2020

**BOND HALL
BASEMENT**

Last Sync With AIM: 02/14/2017

Building	BH
Floor #	B



BASE FLOOR PLAN

Western Washington University (WWU) makes these documents available on an "as is" basis. All warranties and representations of any kind with regard to said documents are disclaimed, including the implied warranties of merchantability and fitness for a particular use. WWU does not warrant the documents against deficiencies of any kind.



TRUE NORTH

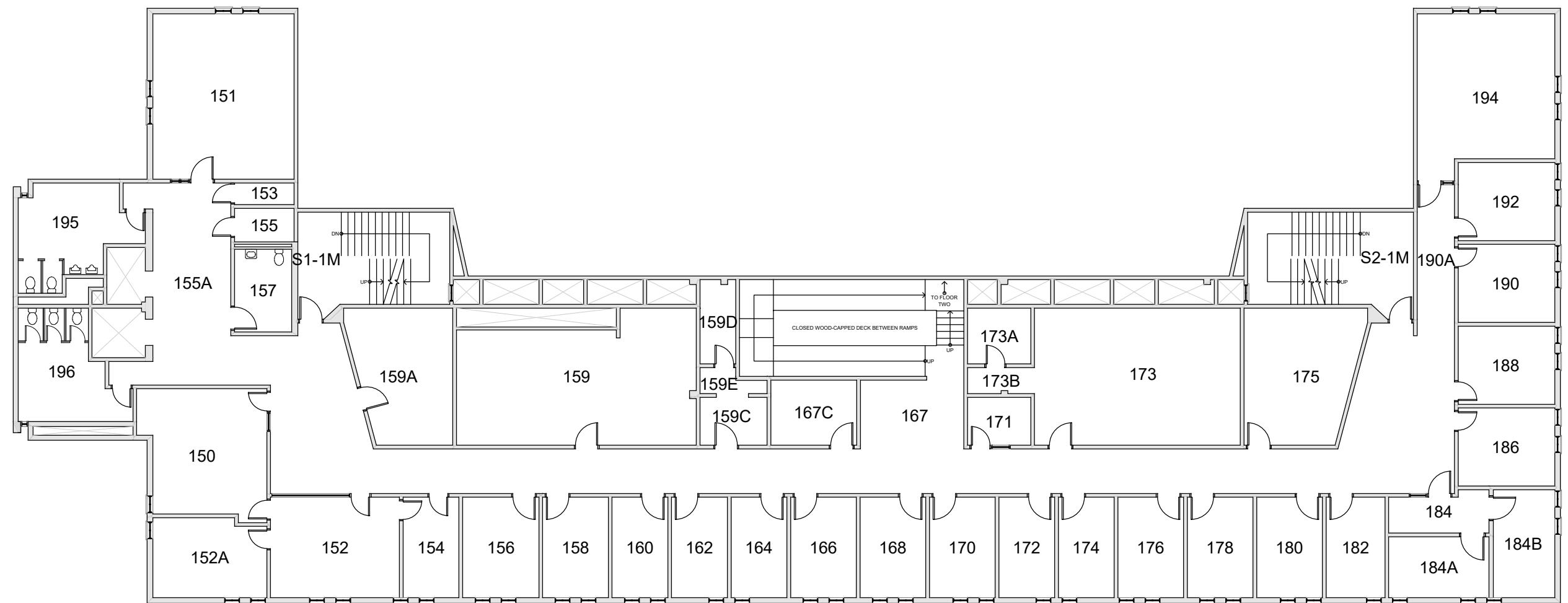


Last Drawing Revision: 04/17/2020

BOND HALL
FLOOR 1

Last Sync With AIM: 02/14/2017

Building	BH
Floor #	1



BASE FLOOR PLAN

Western Washington University (WWU) makes these documents available on an "as is" basis. All warranties and representations of any kind with regard to said documents are disclaimed, including the implied warranties of merchantability and fitness for a particular use. WWU does not warrant the documents against deficiencies of any kind.



TRUE NORTH

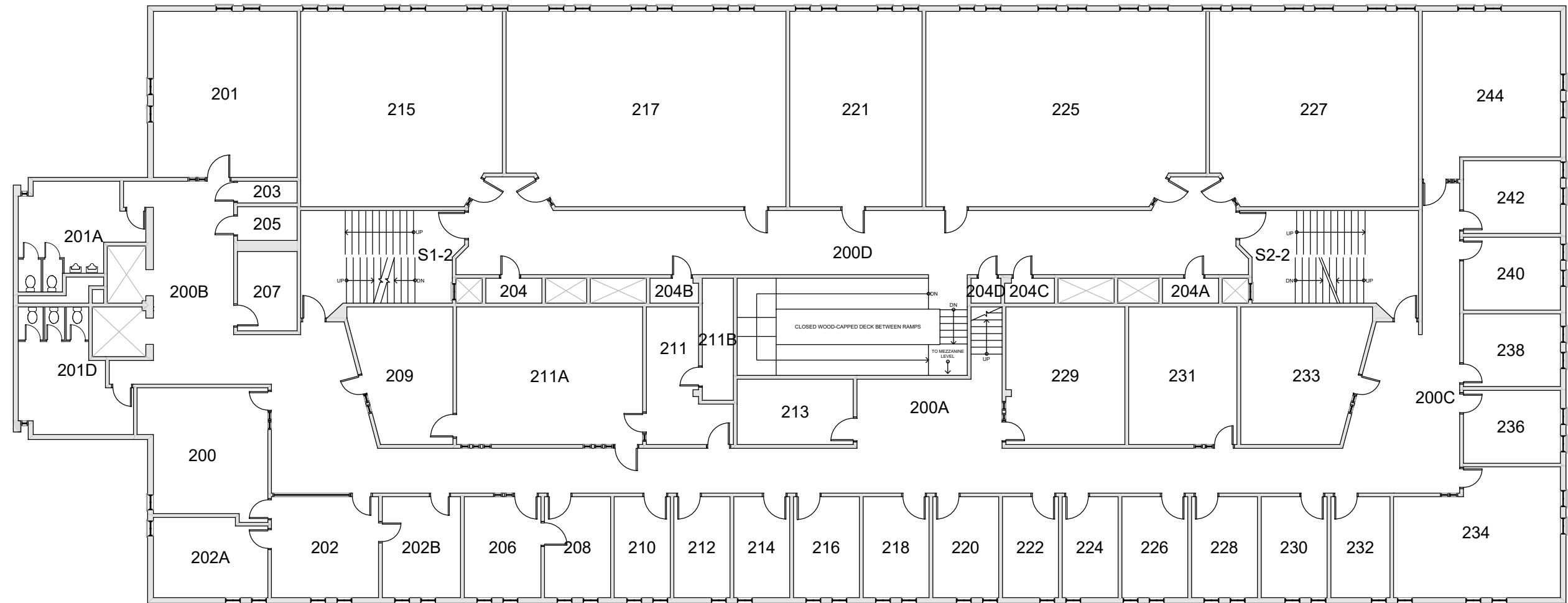


Last Drawing Revision: 04/17/2020

BOND HALL
FLOOR 1 MEZZANINE

Last Sync With AIM: 02/14/2017

Building	BH
Floor #	1M



BASE FLOOR PLAN

Western Washington University (WWU) makes these documents available on an "as is" basis. All warranties and representations of any kind with regard to said documents are disclaimed, including the implied warranties of merchantability and fitness for a particular use. WWU does not warrant the documents against deficiencies of any kind.



TRUE NORTH

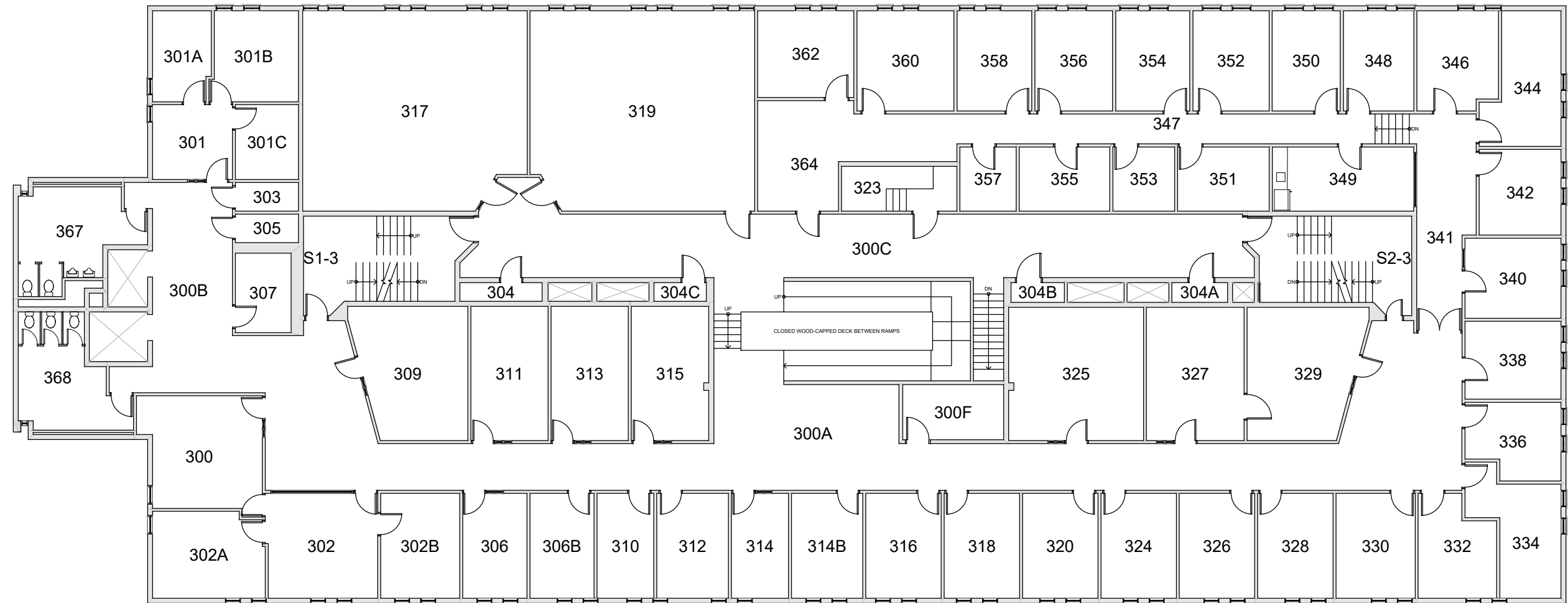


Last Drawing Revision: 04/17/2020

BOND HALL
FLOOR 2

Last Sync With AIM: 02/14/2017

Building	BH
Floor #	2



BASE FLOOR PLAN

Western Washington University (WWU) makes these documents available on an "as is" basis. All warranties and representations of any kind with regard to said documents are disclaimed, including the implied warranties of merchantability and fitness for a particular use. WWU does not warrant the documents against deficiencies of any kind.

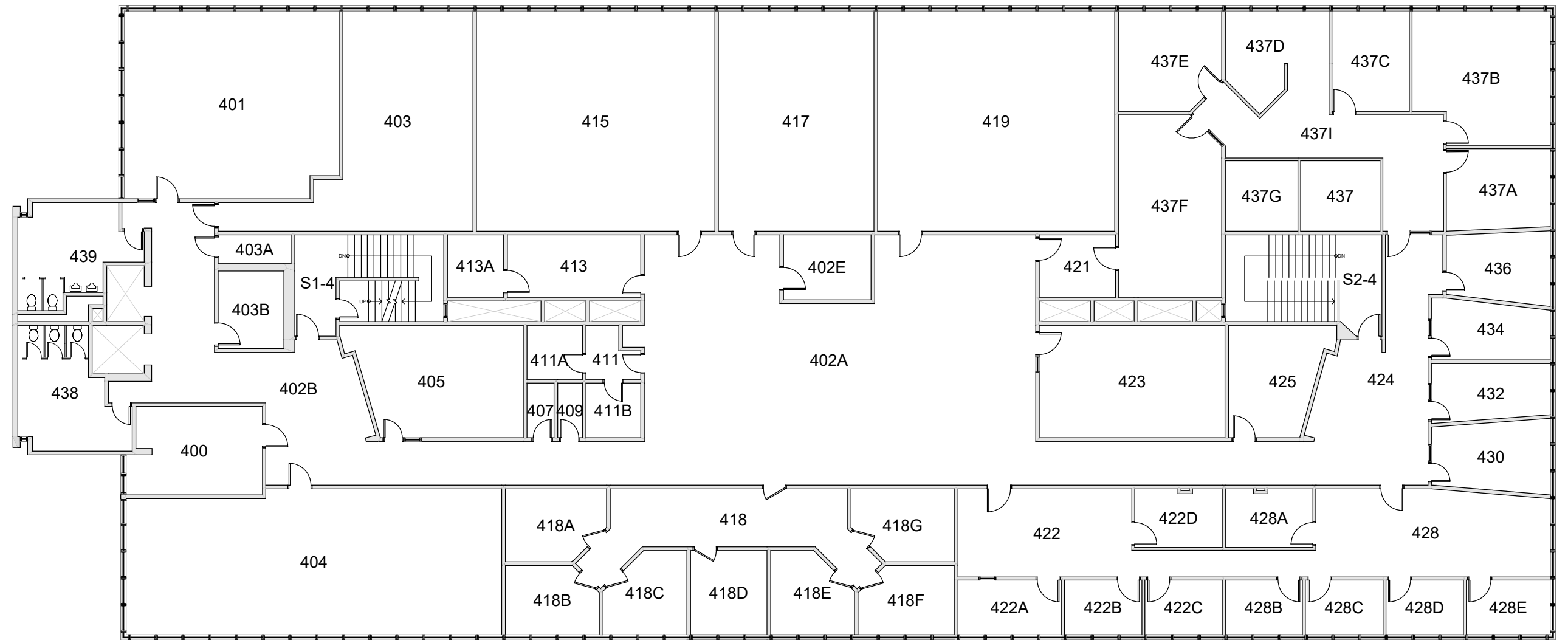


TRUE NORTH



BOND HALL	
FLOOR 3	
Last Drawing Revision: 04/17/2020	Last Sync With AIM: 02/14/2017

Building	BH
Floor #	3



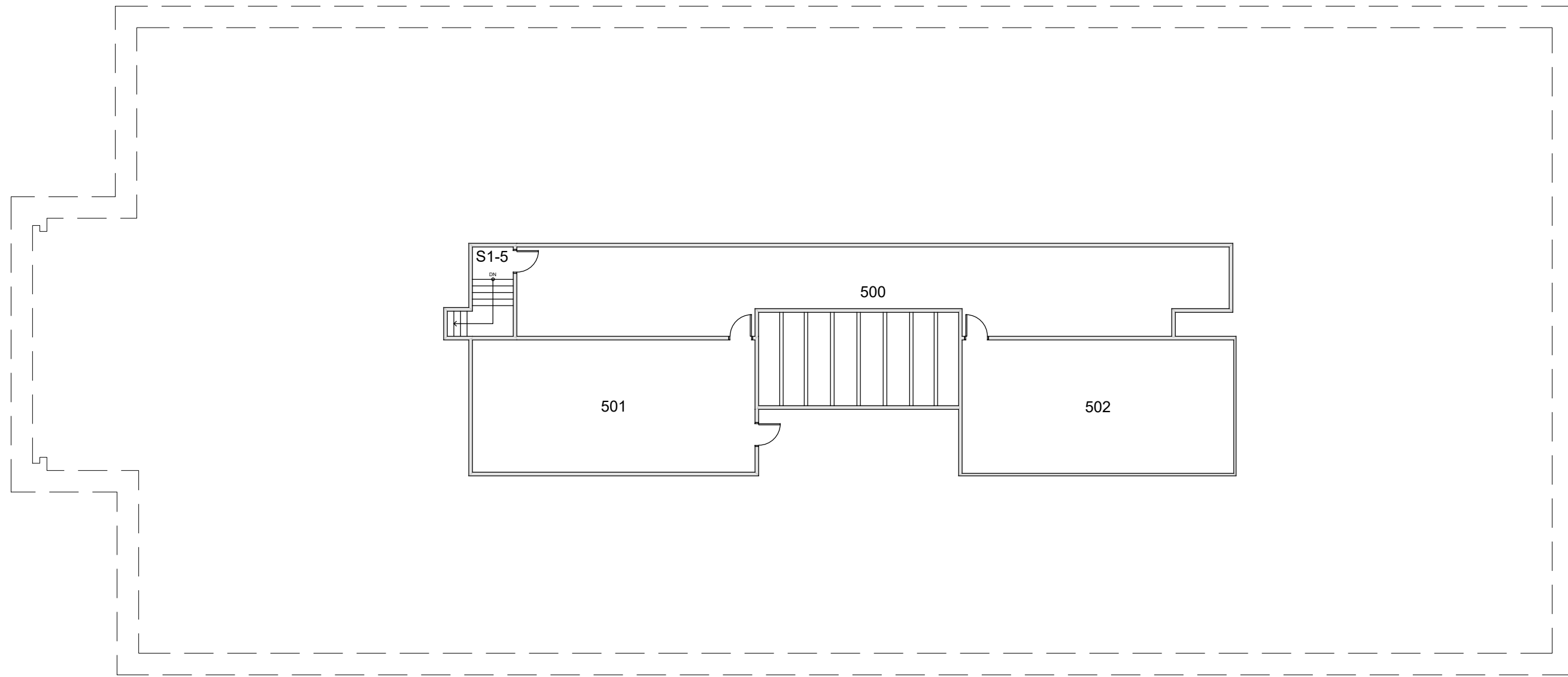
BASE FLOOR PLAN

Western Washington University (WWU) makes these documents available on an "as is" basis. All warranties and representations of any kind with regard to said documents are disclaimed, including the implied warranties of merchantability and fitness for a particular use. WWU does not warrant the documents against deficiencies of any kind.



BOND HALL	
FLOOR 4	
Last Drawing Revision: 04/17/2020	Last Sync With AIM: 04/17/2020

Building	BH
Floor #	4



BASE FLOOR PLAN

Western Washington University (WWU) makes these documents available on an "as is" basis. All warranties and representations of any kind with regard to said documents are disclaimed, including the implied warranties of merchantability and fitness for a particular use. WWU does not warrant the documents against deficiencies of any kind.



TRUE NORTH



BOND HALL PENTHOUSE	
Last Drawing Revision: 04/17/2020	Last Sync With AIM: 02/14/2017

Building BH
Floor # 5