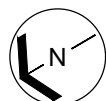


Western Washington University (WU) makes these documents available on an "as is" basis. All warranties and representations of any kind with regard to said documents are disclaimed, including the implied warranties of merchantability and fitness for a particular use. WU does not warrant the documents against deficiencies of any kind.



TRUE NORTH



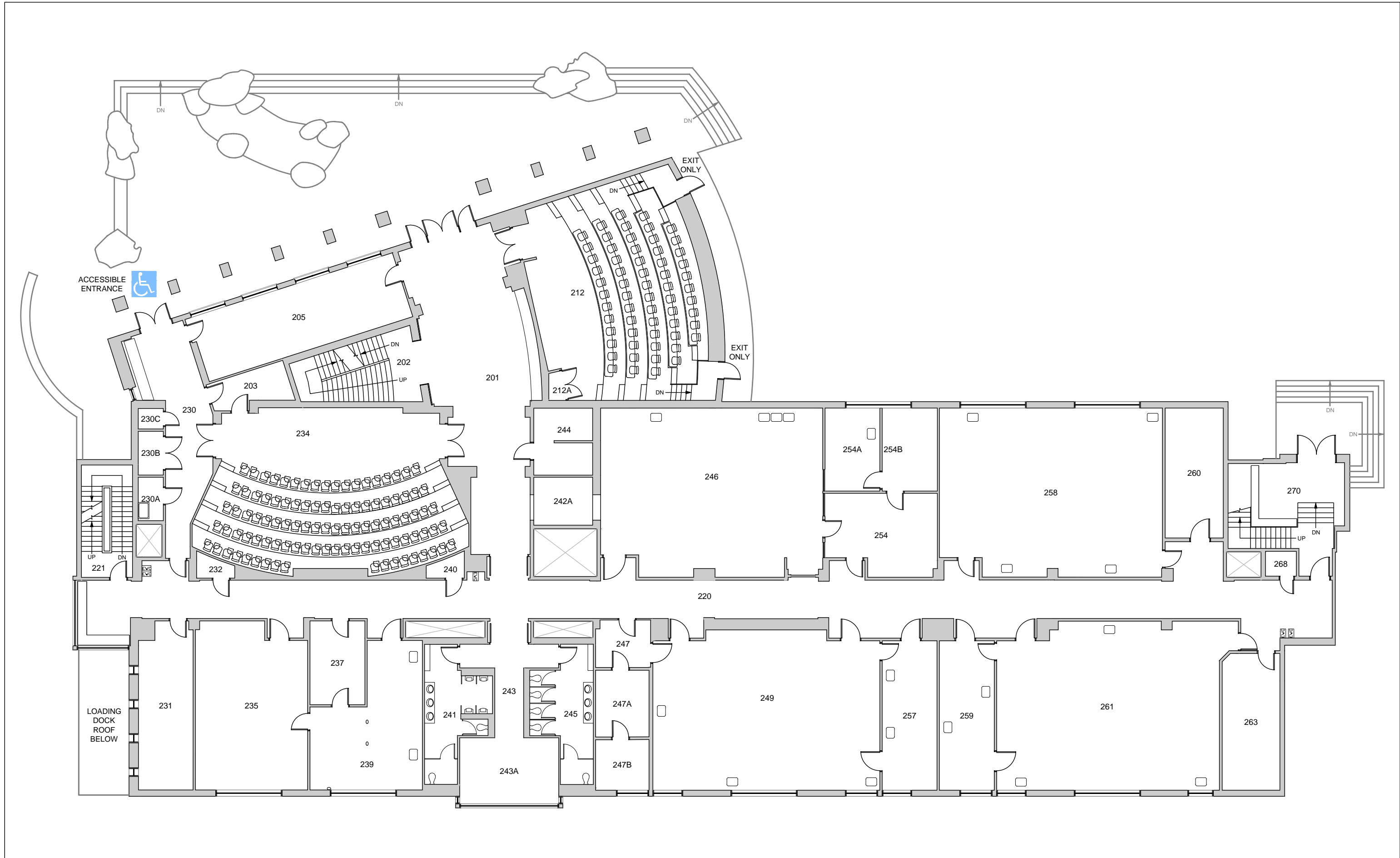
Date Revised: 03/11/2016

# BIOLOGY BUILDING

FLOOR 1

Last Sync With FAMIS: 09/25/2015

Building/Zone	<b>BI</b>
Floor #	<b>1</b>



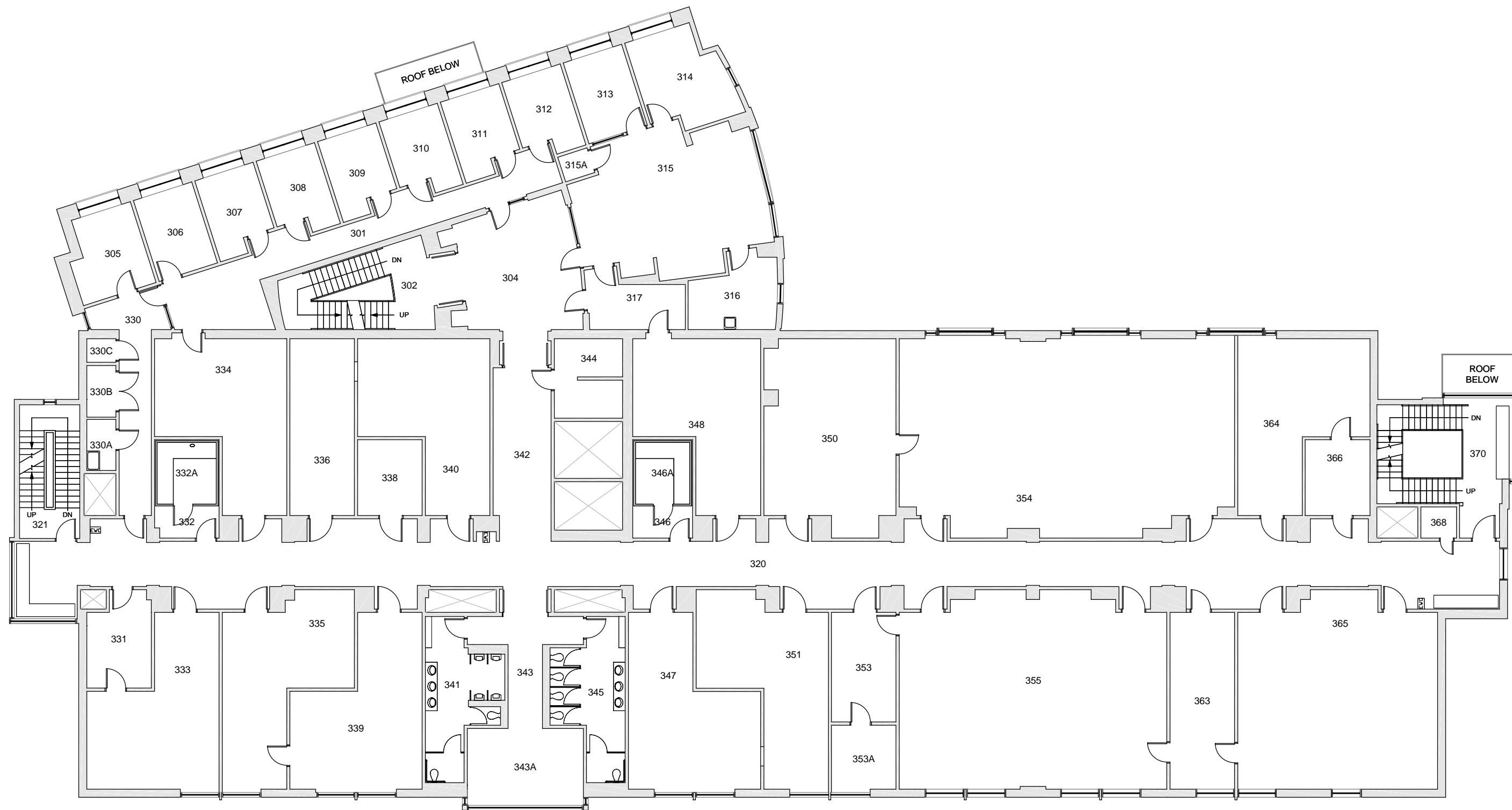
Western Washington University (WU) makes these documents available on an "as is" basis. All warranties and representations of any kind with regard to said documents are disclaimed, including the implied warranties of merchantability and fitness for a particular use. WU does not warrant the documents against deficiencies of any kind.



**BIOLOGY BUILDING**  
FLOOR 2

Date Revised: 03/11/2016 Last Sync With FAMIS: 09/25/2015

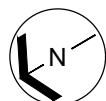
Building Zone	<b>BI</b>
Floor #	<b>2</b>



Western Washington University (WU) makes these documents available on an "as is" basis. All warranties and representations of any kind with regard to said documents are disclaimed, including the implied warranties of merchantability and fitness for a particular use. WU does not warrant the documents against deficiencies of any kind.



TRUE NORTH



Date Revised: 03/11/2016

# BIOLOGY BUILDING

## FLOOR 3

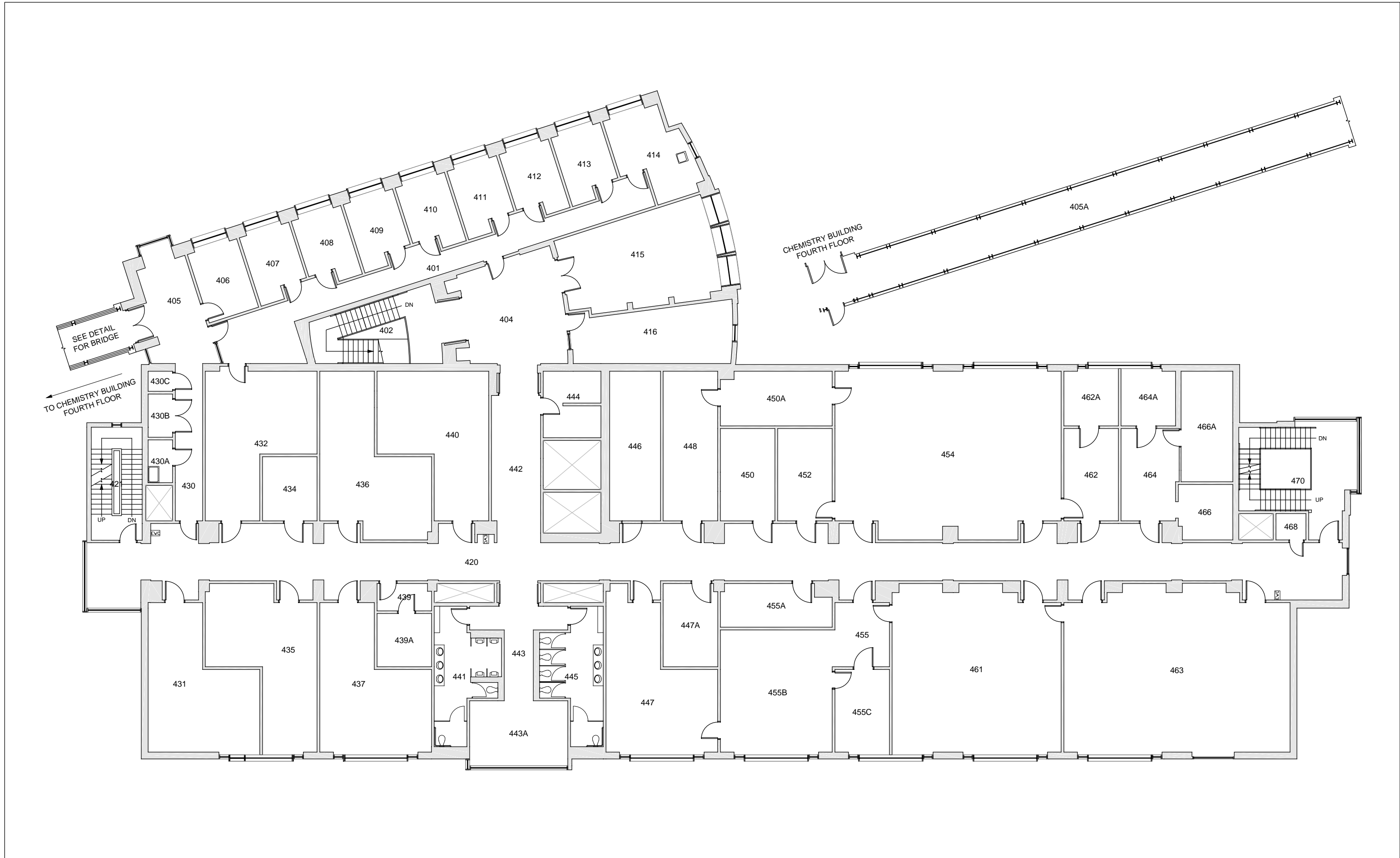
Last Sync With FAMIS: 09/25/2015

Building/Zone

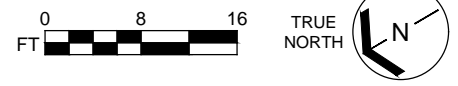
**BI**

Floor #

**3**



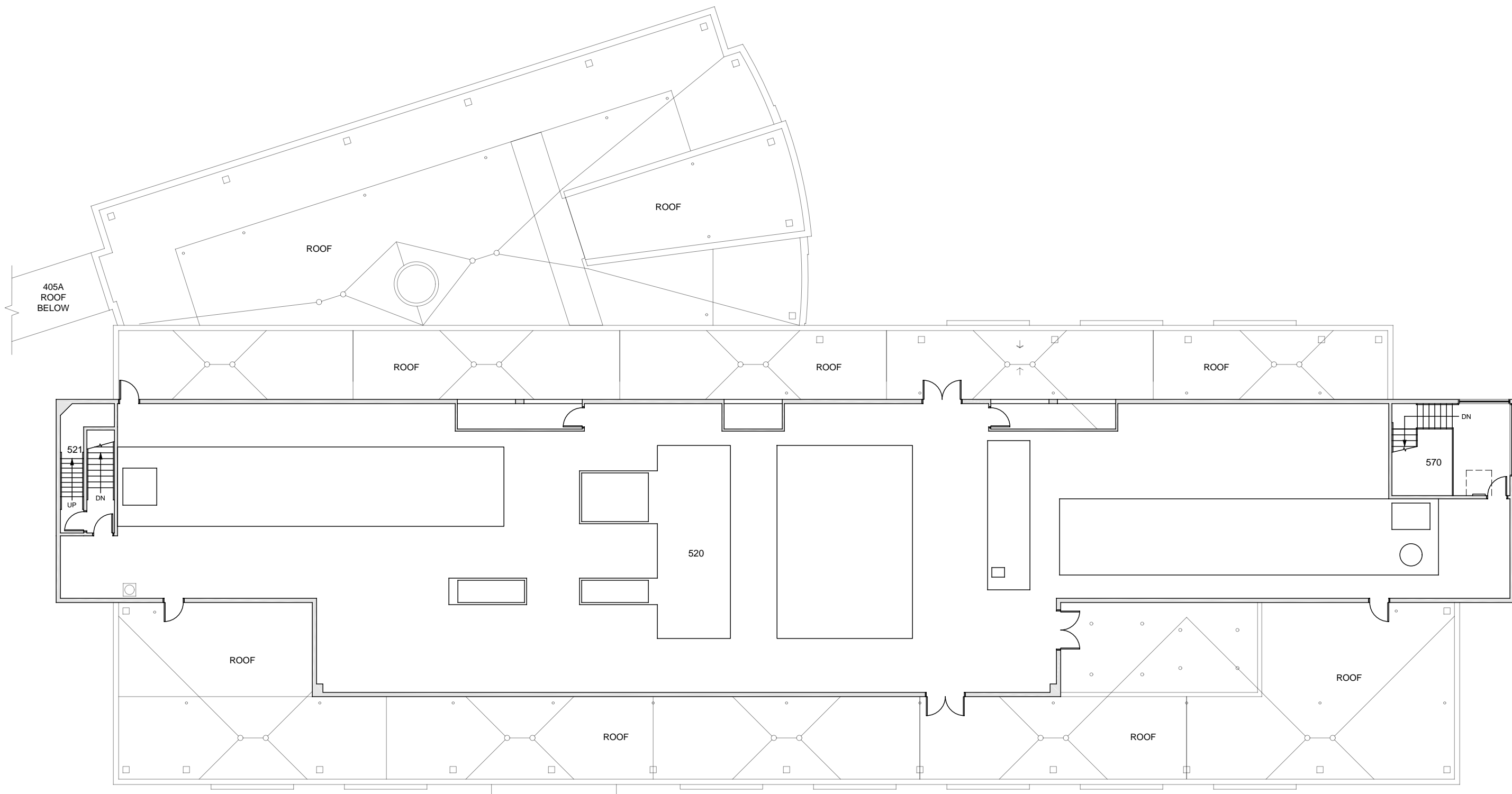
Western Washington University (WWU) makes these documents available on an "as is" basis. All warranties and representations of any kind with regard to said documents are disclaimed, including the implied warranties of merchantability and fitness for a particular use. WWU does not warrant the documents against deficiencies of any kind.



**BIOLOGY BUILDING**  
FLOOR 4

Date Revised: 03/11/2016 Last Sync With FAMIS: 09/25/2015

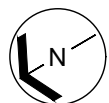
Building/Zone	<b>BI</b>
Floor #	<b>4</b>



Western Washington University (WU) makes these documents available on an "as is" basis. All warranties and representations of any kind with regard to said documents are disclaimed, including the implied warranties of merchantability and fitness for a particular use. WU does not warrant the documents against deficiencies of any kind.



TRUE NORTH



Date Revised: 03/11/2016

# BIOLOGY BUILDING

PENTHOUSE / ROOF

Last Sync With FAMIS: 09/25/2015

Building Zone	<b>BI</b>
Floor #	<b>5</b>