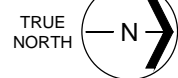


Western Washington University (WWU) makes these documents available on an "as is" basis. All warranties and representations of any kind with regard to said documents are disclaimed, including the implied warranties of merchantability and fitness for a particular use. WWU does not warrant the documents against deficiencies of any kind.



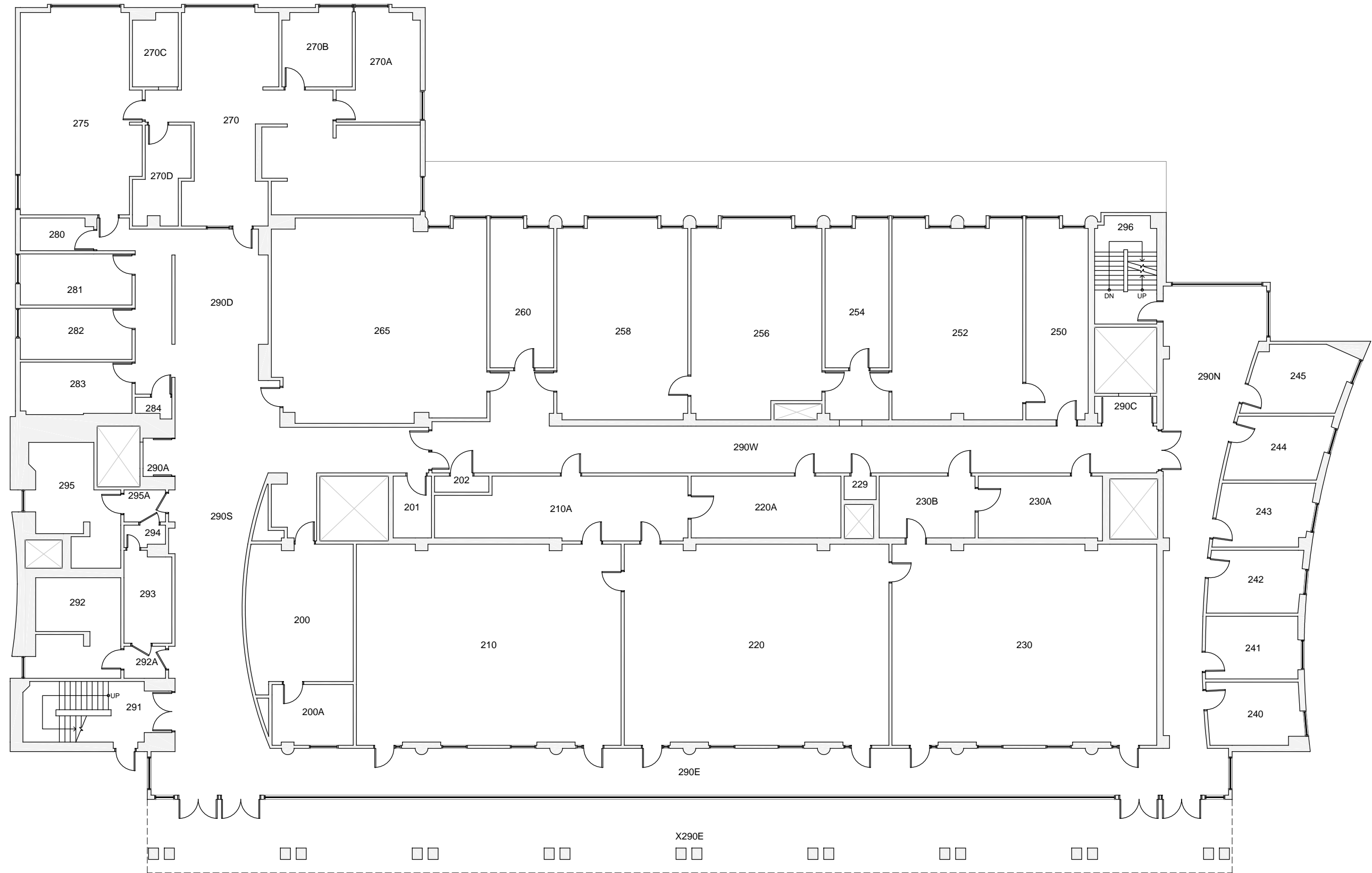
Date Revised: 12/13/2016

MORSE HALL

FLOOR 1

Last Sync With FAMIS: 09/22/2015

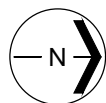
Building Zone	CB
Floor #	1



Western Washington University (WWU) makes these documents available on an "as is" basis. All warranties and representations of any kind with regard to said documents are disclaimed, including the implied warranties of merchantability and fitness for a particular use. WWU does not warrant the documents against deficiencies of any kind.



TRUE NORTH



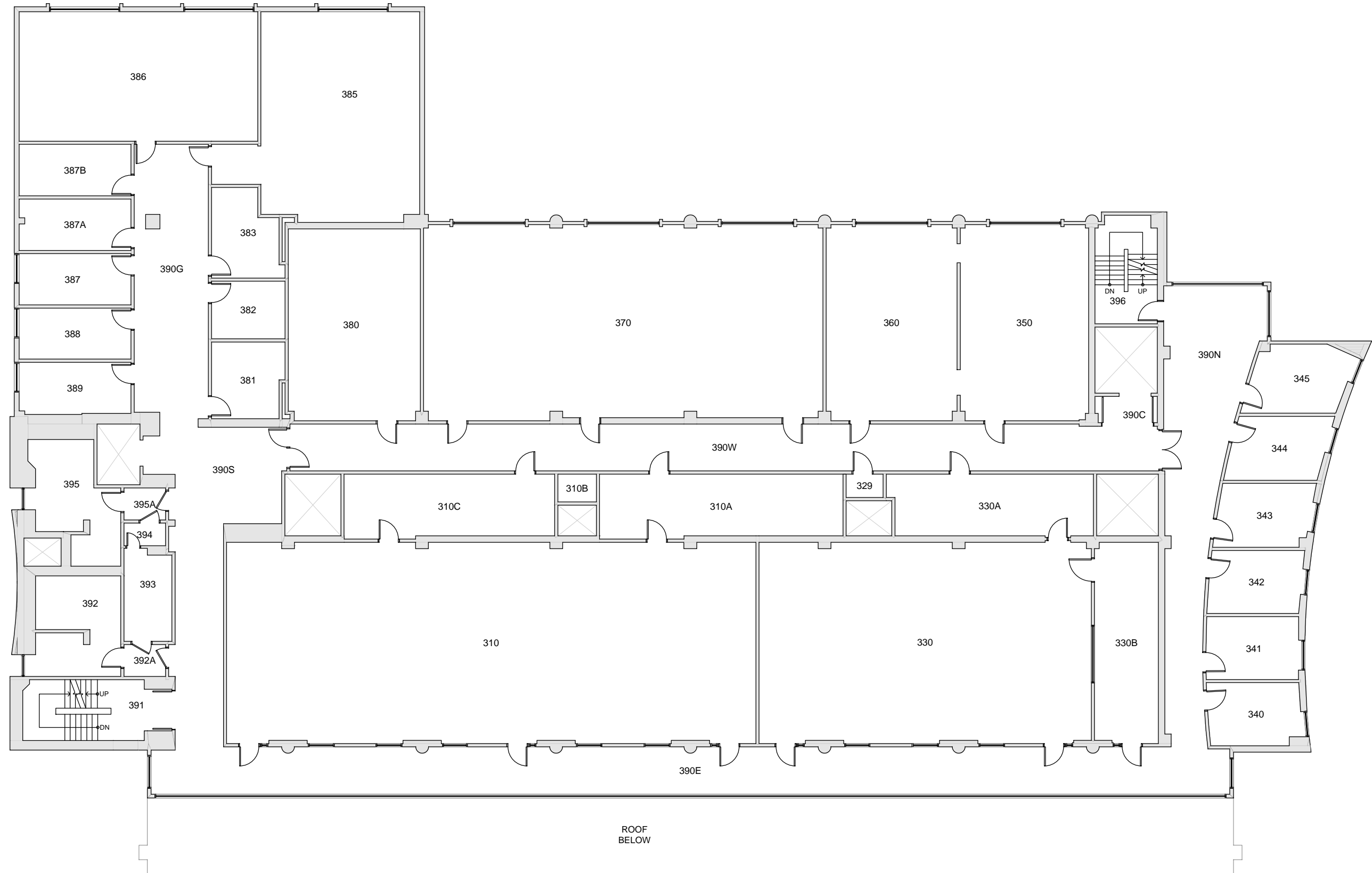
MORSE HALL

FLOOR 2

Date Revised: 12/13/2016

Last Sync With FAMIS: 09/22/2015

Building Zone
CB
Floor #
2



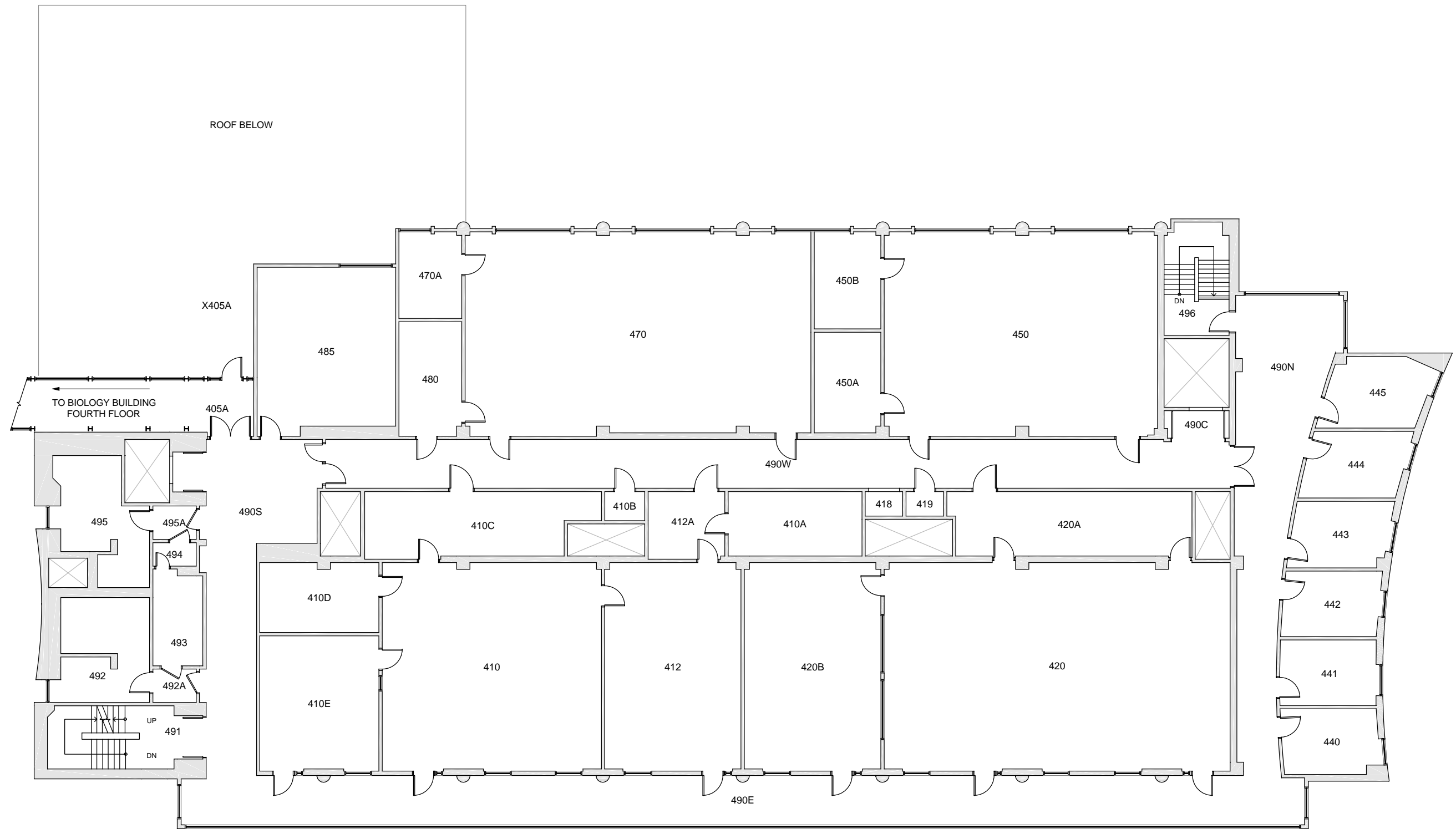
BASE FLOOR PLAN

Western Washington University (WWU) makes these documents available on an "as is" basis. All warranties and representations of any kind with regard to said documents are disclaimed, including the implied warranties of merchantability and fitness for a particular use. WWU does not warrant the documents against deficiencies of any kind.



<p>MORSE HALL FLOOR 3</p> <p>Last Drawing Revision: 09/21/2018</p>	<p>Last Sync With AIM: 09/21/2018</p>
---	---------------------------------------

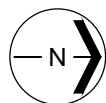
<p>Building CB</p>
<p>Floor # 3</p>



Western Washington University (WWU) makes these documents available on an "as is" basis. All warranties and representations of any kind with regard to said documents are disclaimed, including the implied warranties of merchantability and fitness for a particular use. WWU does not warrant the documents against deficiencies of any kind.



TRUE NORTH



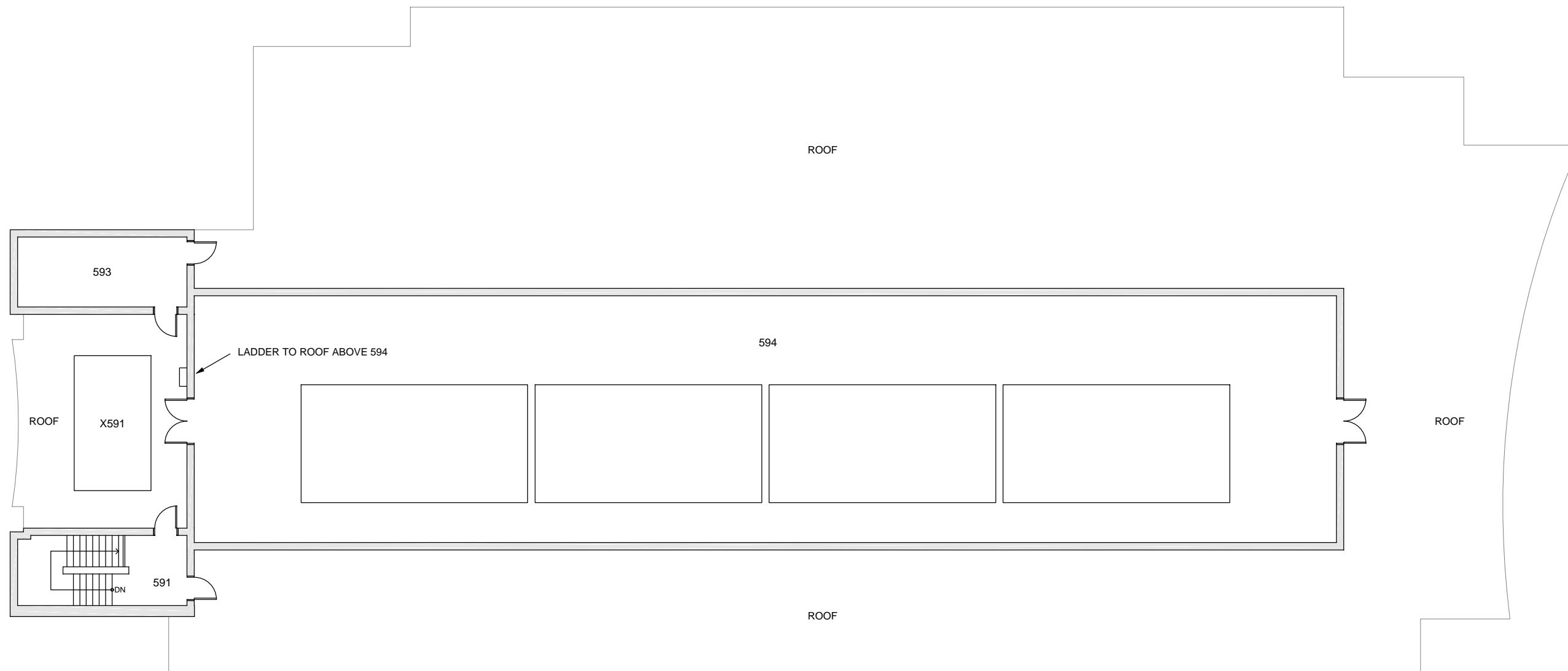
Date Revised: 12/13/2016

MORSE HALL

FLOOR 4

Last Sync With FAMIS: 09/22/2015

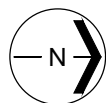
Building/Zone
CB
Floor #
4



Western Washington University (WWU) makes these documents available on an "as is" basis. All warranties and representations of any kind with regard to said documents are disclaimed, including the implied warranties of merchantability and fitness for a particular use. WWU does not warrant the documents against deficiencies of any kind.



TRUE NORTH



Date Revised: 12/13/2016

MORSE HALL
PENTHOUSE / ROOF

Last Sync With FAMIS: 09/22/2015

Building Zone
CB
Floor #
5