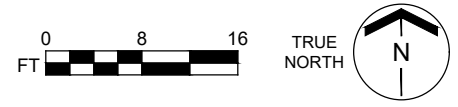


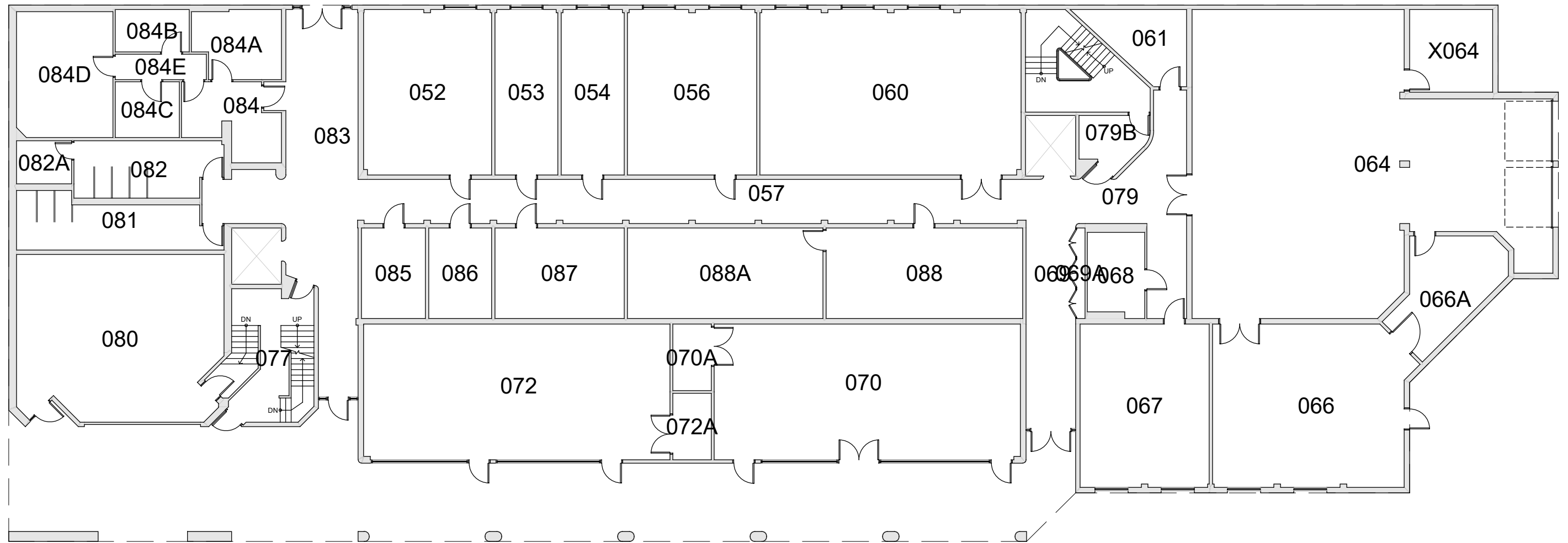
**BASE FLOOR PLAN**

Western Washington University (WWU) makes these documents available on an "as is" basis. All warranties and representations of any kind with regard to said documents are disclaimed, including the implied warranties of merchantability and fitness for a particular use. WWU does not warrant the documents against deficiencies of any kind.



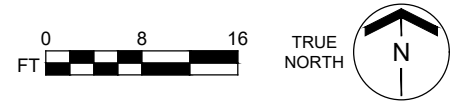
<b>ENVIRONMENTAL STUDIES CENTER</b>	
BASEMENT	
Last Drawing Revision: 06/03/2020	Last Sync With AIM: 02/09/2017

Building	<b>ES</b>
Floor #	<b>B</b>



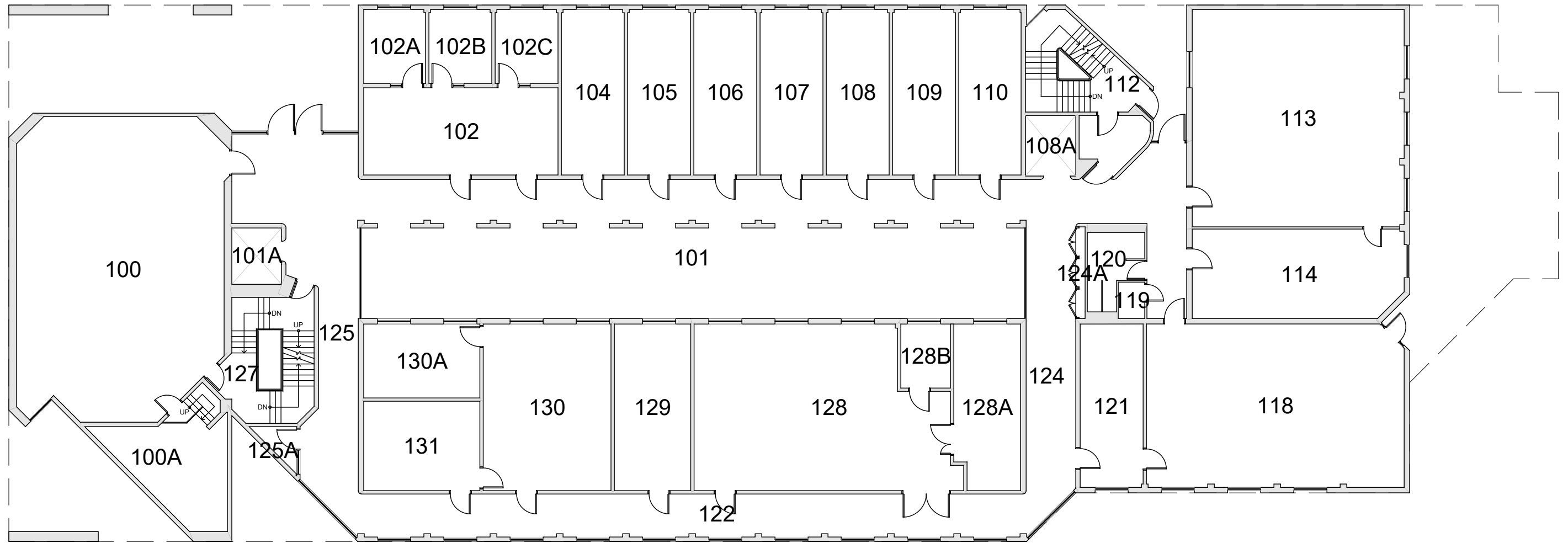
**BASE FLOOR PLAN**

Western Washington University (WWU) makes these documents available on an "as is" basis. All warranties and representations of any kind with regard to said documents are disclaimed, including the implied warranties of merchantability and fitness for a particular use. WWU does not warrant the documents against deficiencies of any kind.



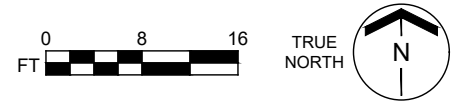
<b>ENVIRONMENTAL STUDIES CENTER</b>	
CONCOURSE	
Last Drawing Revision: 06/03/2020	Last Sync With AIM: 08/30/2019

Building <b>ES</b>
Floor # <b>C</b>



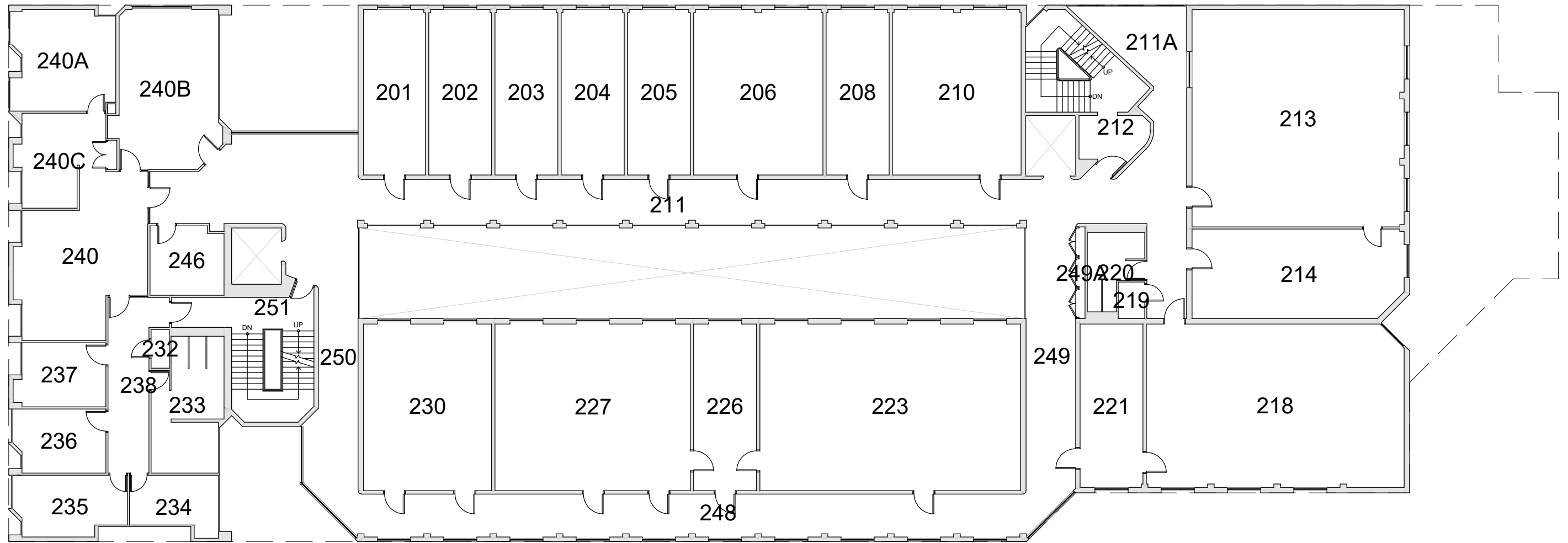
**BASE FLOOR PLAN**

Western Washington University (WWU) makes these documents available on an "as is" basis. All warranties and representations of any kind with regard to said documents are disclaimed, including the implied warranties of merchantability and fitness for a particular use. WWU does not warrant the documents against deficiencies of any kind.



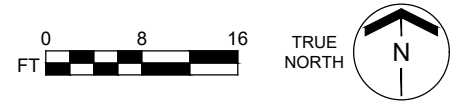
<b>ENVIRONMENTAL STUDIES CENTER</b>	
FLOOR 1	
Last Drawing Revision: 12/03/2020	Last Sync With AIM: 12/03/2020

Building <b>ES</b>
Floor # <b>1</b>



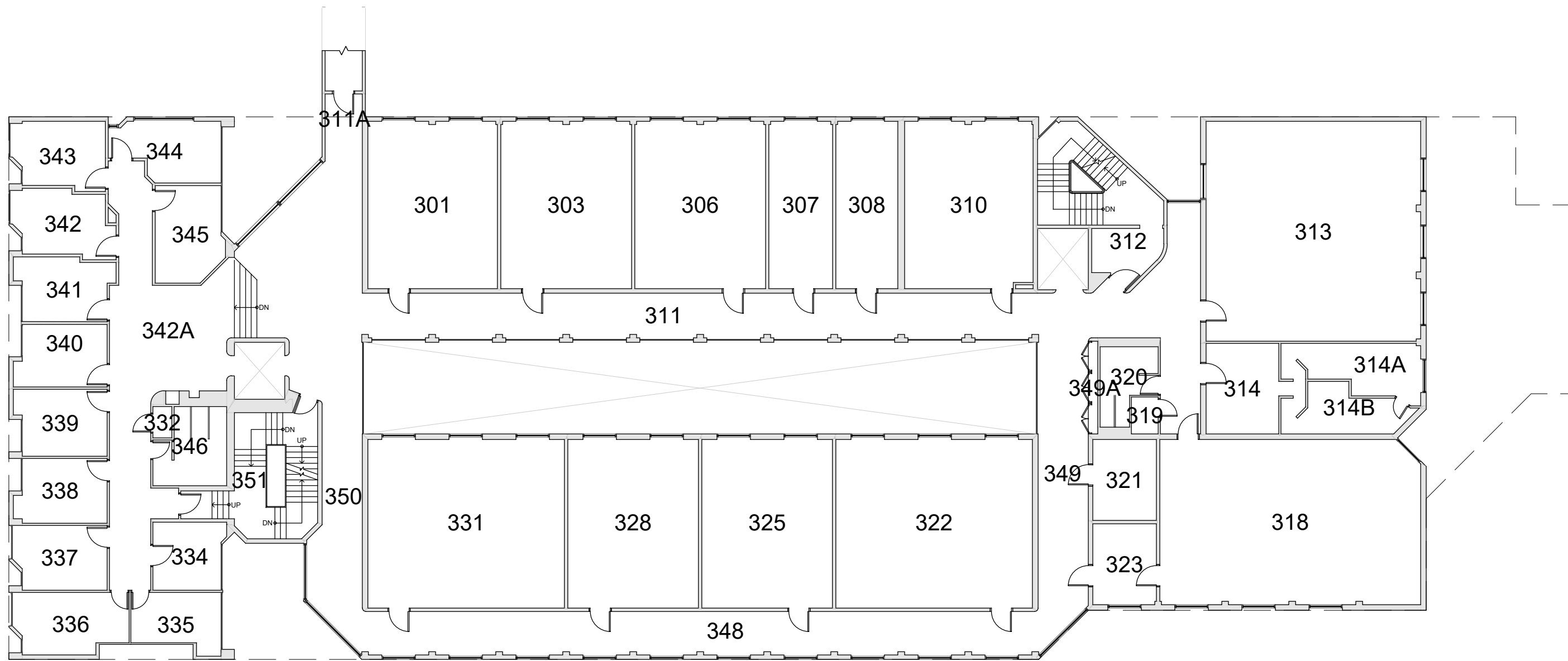
BASE FLOOR PLAN

Western Washington University (WWU) makes these documents available on an "as is" basis. All warranties and representations of any kind with regard to said documents are disclaimed, including the implied warranties of merchantability and fitness for a particular use. WWU does not warrant the documents against deficiencies of any kind.



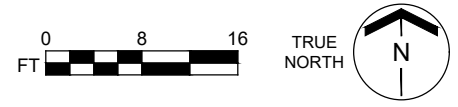
<h2>ENVIRONMENTAL STUDIES CENTER</h2> <p>FLOOR 2</p>		<p>Last Sync With AIM: 02/09/2017</p>
<p>Last Drawing Revision: 06/03/2020</p>		

Building	ES
Floor #	2



**BASE FLOOR PLAN**

Western Washington University (WWU) makes these documents available on an "as is" basis. All warranties and representations of any kind with regard to said documents are disclaimed, including the implied warranties of merchantability and fitness for a particular use. WWU does not warrant the documents against deficiencies of any kind.



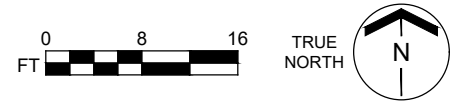
<b>ENVIRONMENTAL STUDIES CENTER</b>	
FLOOR 3	
Last Drawing Revision: 06/03/2020	Last Sync With AIM: 06/03/2020

Building <b>ES</b>
Floor # <b>3</b>



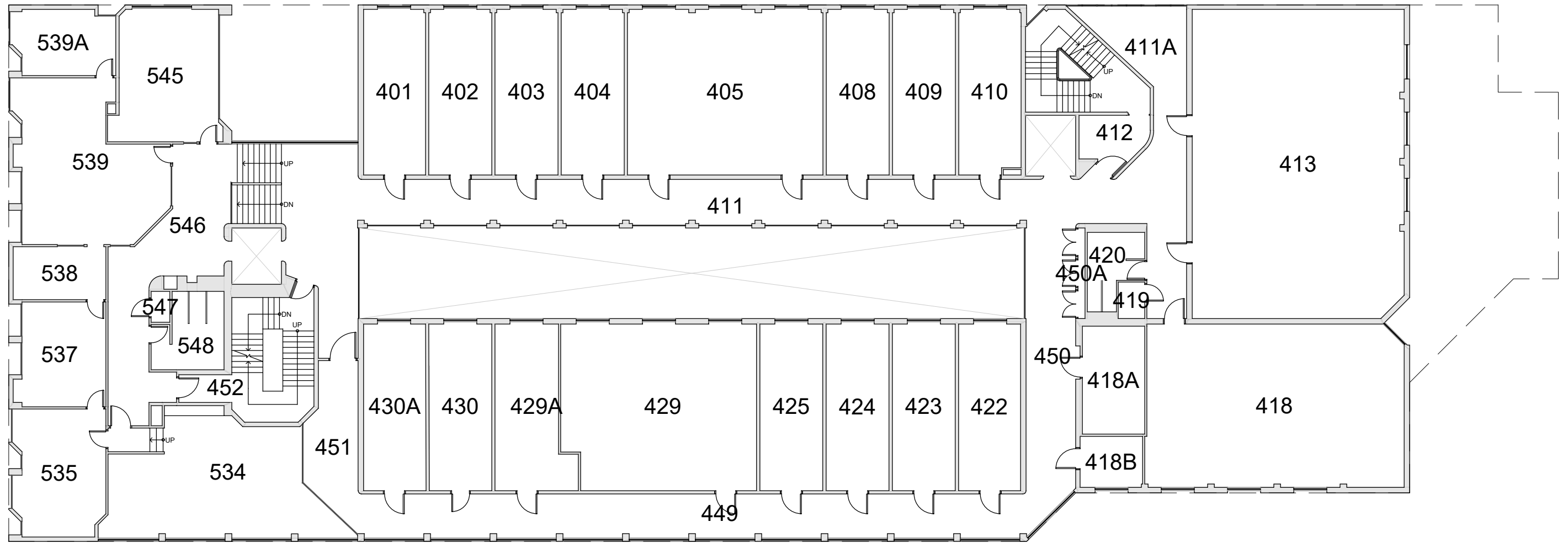
**BASE FLOOR PLAN**

Western Washington University (WWU) makes these documents available on an "as is" basis. All warranties and representations of any kind with regard to said documents are disclaimed, including the implied warranties of merchantability and fitness for a particular use. WWU does not warrant the documents against deficiencies of any kind.



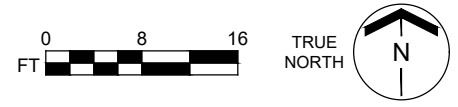
<b>ENVIRONMENTAL STUDIES CENTER</b>	
FLOOR 4	
Last Drawing Revision: 06/03/2020	Last Sync With AIM: 02/09/2017

Building <b>ES</b>
Floor # <b>4</b>



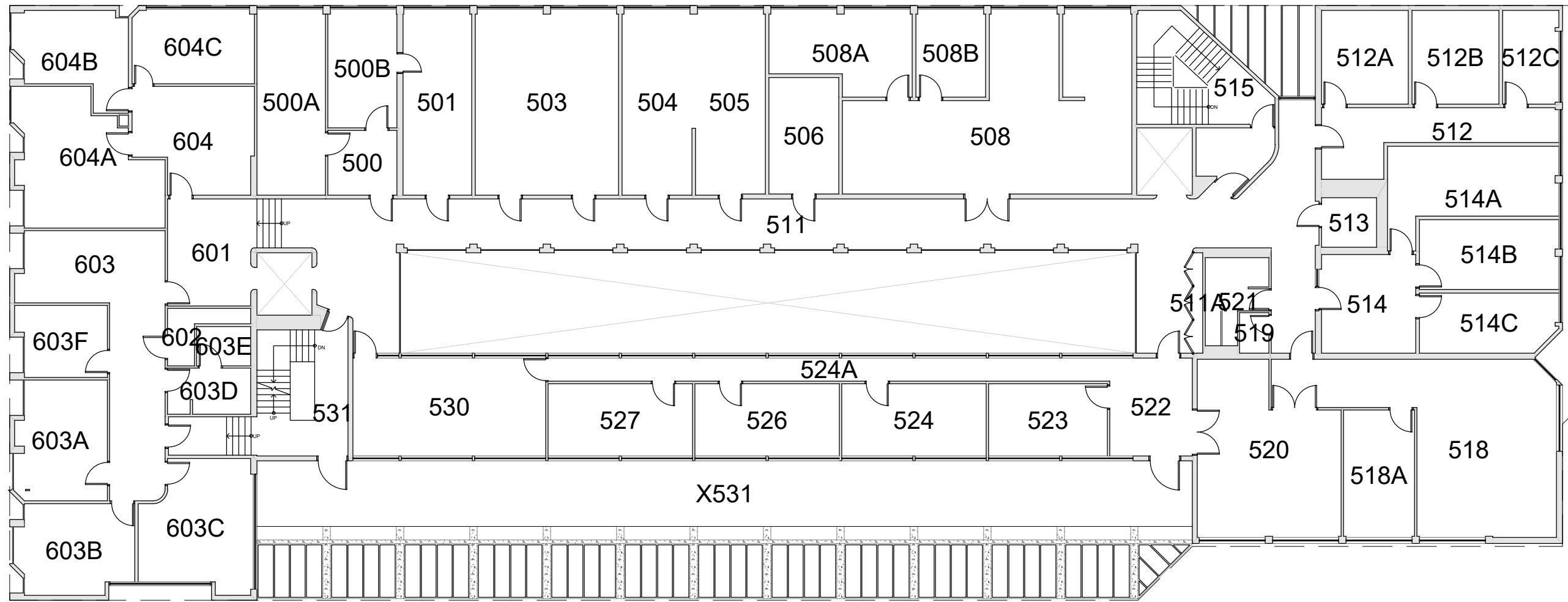
**BASE FLOOR PLAN**

Western Washington University (WWU) makes these documents available on an "as is" basis. All warranties and representations of any kind with regard to said documents are disclaimed, including the implied warranties of merchantability and fitness for a particular use. WWU does not warrant the documents against deficiencies of any kind.



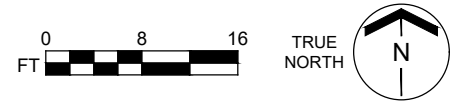
<b>ENVIRONMENTAL STUDIES CENTER</b>	
FLOOR 04 & 05 SPLIT	
Last Drawing Revision: 06/03/2020	Last Sync With AIM: 06/03/2020

Building	<b>ES</b>
Floor #	<b>4-05</b>



**BASE FLOOR PLAN**

Western Washington University (WWU) makes these documents available on an "as is" basis. All warranties and representations of any kind with regard to said documents are disclaimed, including the implied warranties of merchantability and fitness for a particular use. WWU does not warrant the documents against deficiencies of any kind.

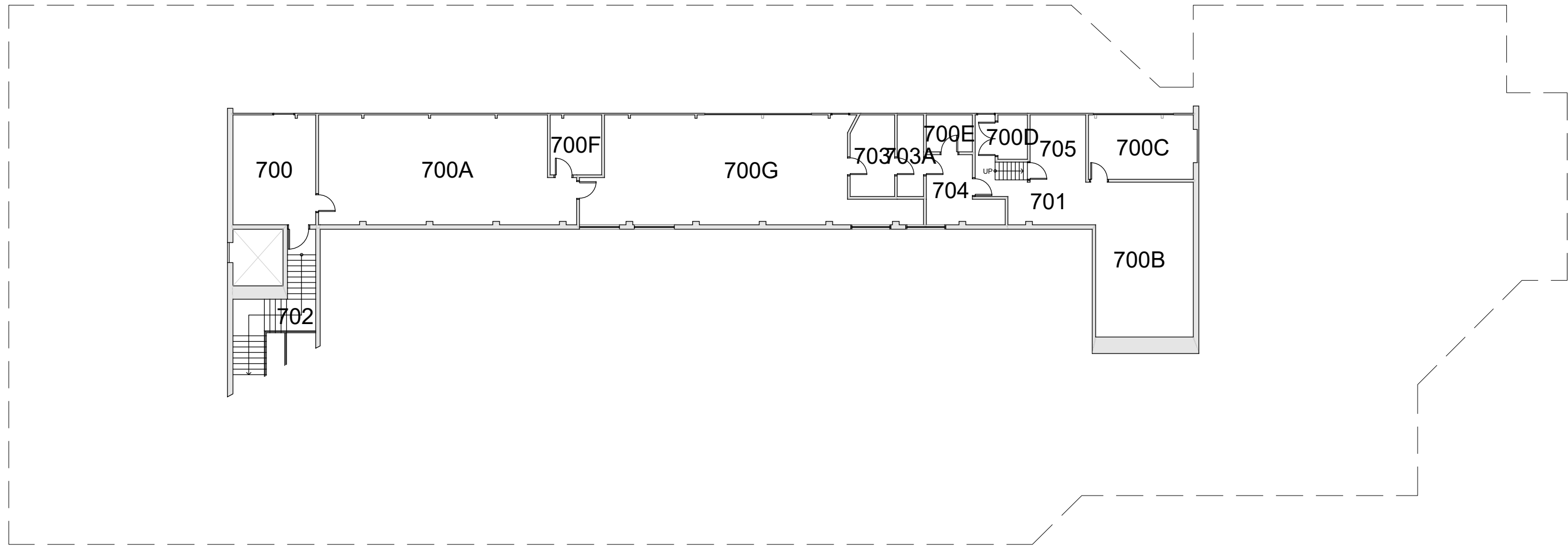


**ENVIRONMENTAL STUDIES CENTER**  
FLOOR 05 & 06 SPLIT

Last Drawing Revision: 10/08/2021 Last Sync With AIM: 03/14/2019

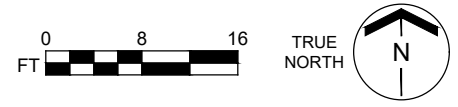
Building	<b>ES</b>
Floor #	<b>5-06</b>





**BASE FLOOR PLAN**

Western Washington University (WWU) makes these documents available on an "as is" basis. All warranties and representations of any kind with regard to said documents are disclaimed, including the implied warranties of merchantability and fitness for a particular use. WWU does not warrant the documents against deficiencies of any kind.



<b>ENVIRONMENTAL STUDIES CENTER</b>	
FLOOR 07 / PENTHOUSE	
Last Drawing Revision: 06/03/2020	Last Sync With AIM: 02/09/2017

Building <b>ES</b>
Floor # <b>7</b>