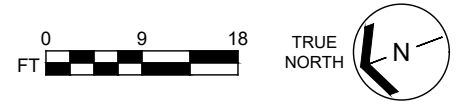


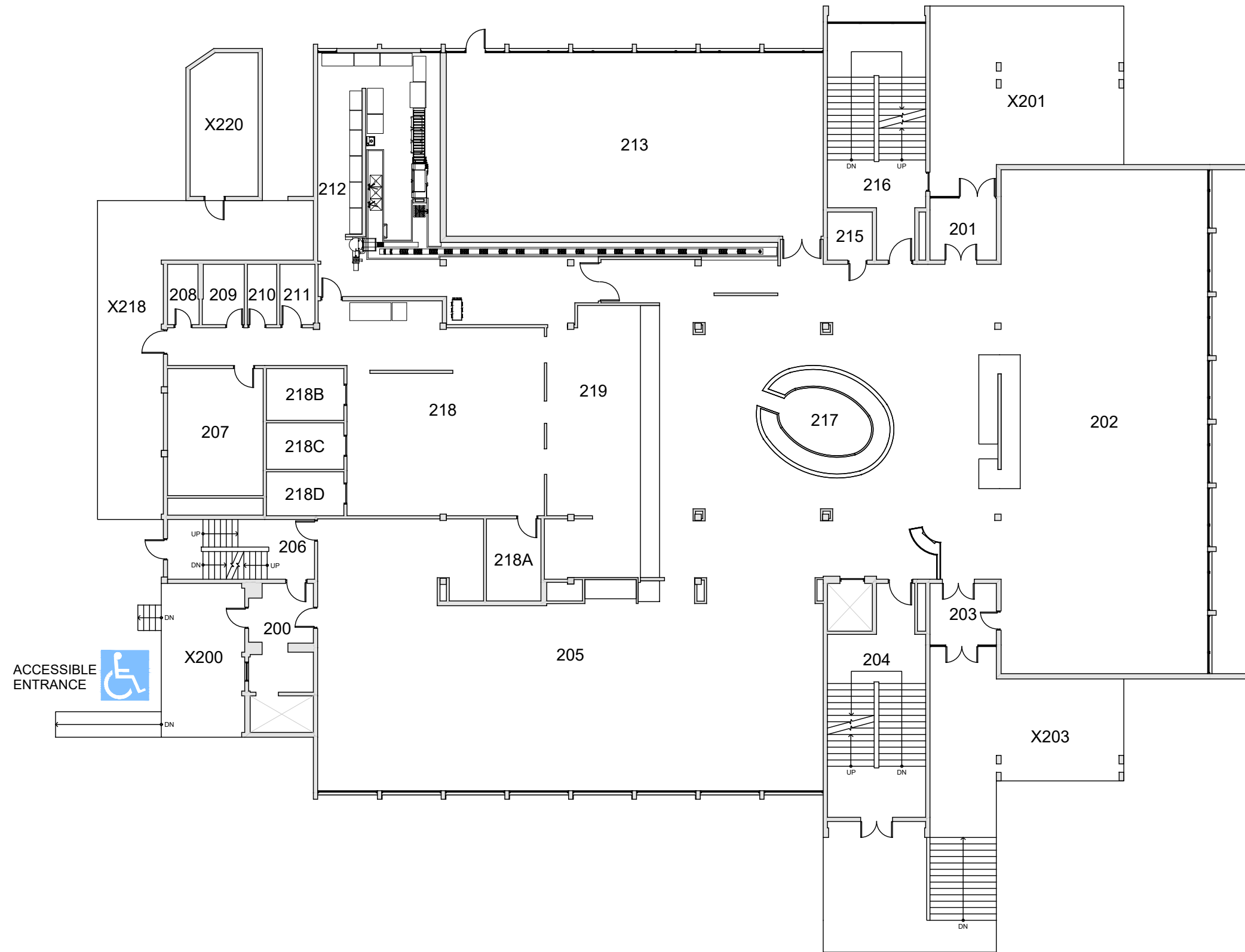
BASE FLOOR PLAN

Western Washington University (WWU) makes these documents available on an "as is" basis. All warranties and representations of any kind with regard to said documents are disclaimed, including the implied warranties of merchantability and fitness for a particular use. WWU does not warrant the documents against deficiencies of any kind.



FAIRHAVEN COLLEGE	
FLOOR 1	
Last Drawing Revision: 01/28/2022	Last Sync With AIM: 01/26/2022

Building	FA
Floor #	1



BASE FLOOR PLAN

Western Washington University (WWU) makes these documents available on an "as is" basis. All warranties and representations of any kind with regard to said documents are disclaimed, including the implied warranties of merchantability and fitness for a particular use. WWU does not warrant the documents against deficiencies of any kind.



FAIRHAVEN COLLEGE
FLOOR 2

Last Drawing Revision: 02/04/2022 Last Sync With AIM: 02/04/2022

Building	FA
Floor #	2



BASE FLOOR PLAN

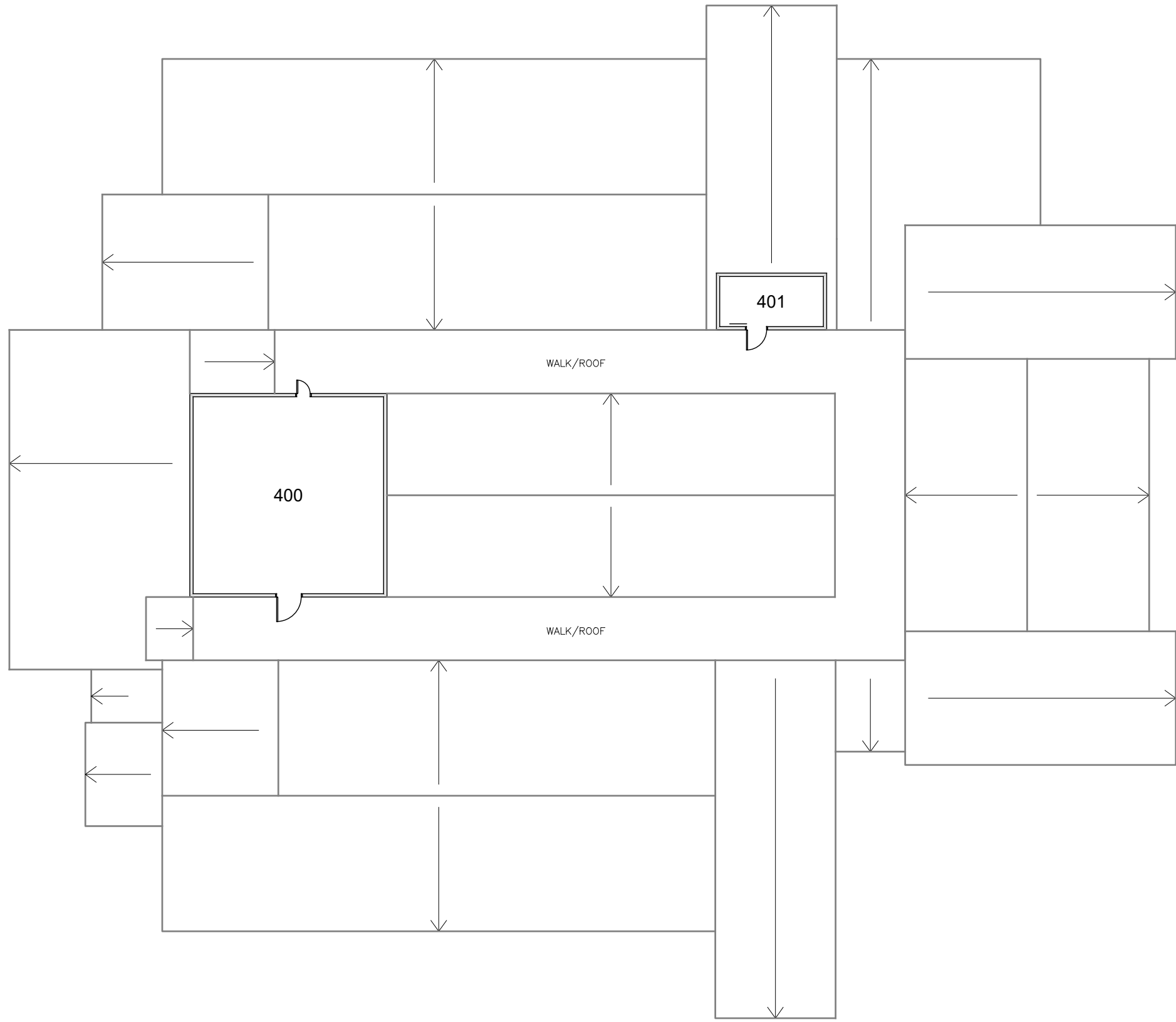
Western Washington University (WWU) makes these documents available on an "as is" basis. All warranties and representations of any kind with regard to said documents are disclaimed, including the implied warranties of merchantability and fitness for a particular use. WWU does not warrant the documents against deficiencies of any kind.



FAIRHAVEN COLLEGE
FLOOR 3

Last Drawing Revision: 02/09/2022 Last Sync With AIM: 02/09/2022

Building FA
Floor # 3



BASE FLOOR PLAN

Western Washington University (WWU) makes these documents available on an "as is" basis. All warranties and representations of any kind with regard to said documents are disclaimed, including the implied warranties of merchantability and fitness for a particular use. WWU does not warrant the documents against deficiencies of any kind.



TRUE NORTH



FAIRHAVEN COLLEGE	
ATTIC	
Last Drawing Revision: 02/04/2022	Last Sync With AIM: 02/04/2022

Building FA
Floor # 4