

BASE FLOOR PLAN

Western Washington University (WWU) makes these documents available on an "as is" basis. All warranties and representations of any kind with regard to said documents are disclaimed, including the implied warranties of merchantability and fitness for a particular use. WWU does not warrant the documents against deficiencies of any kind.



TRUE NORTH

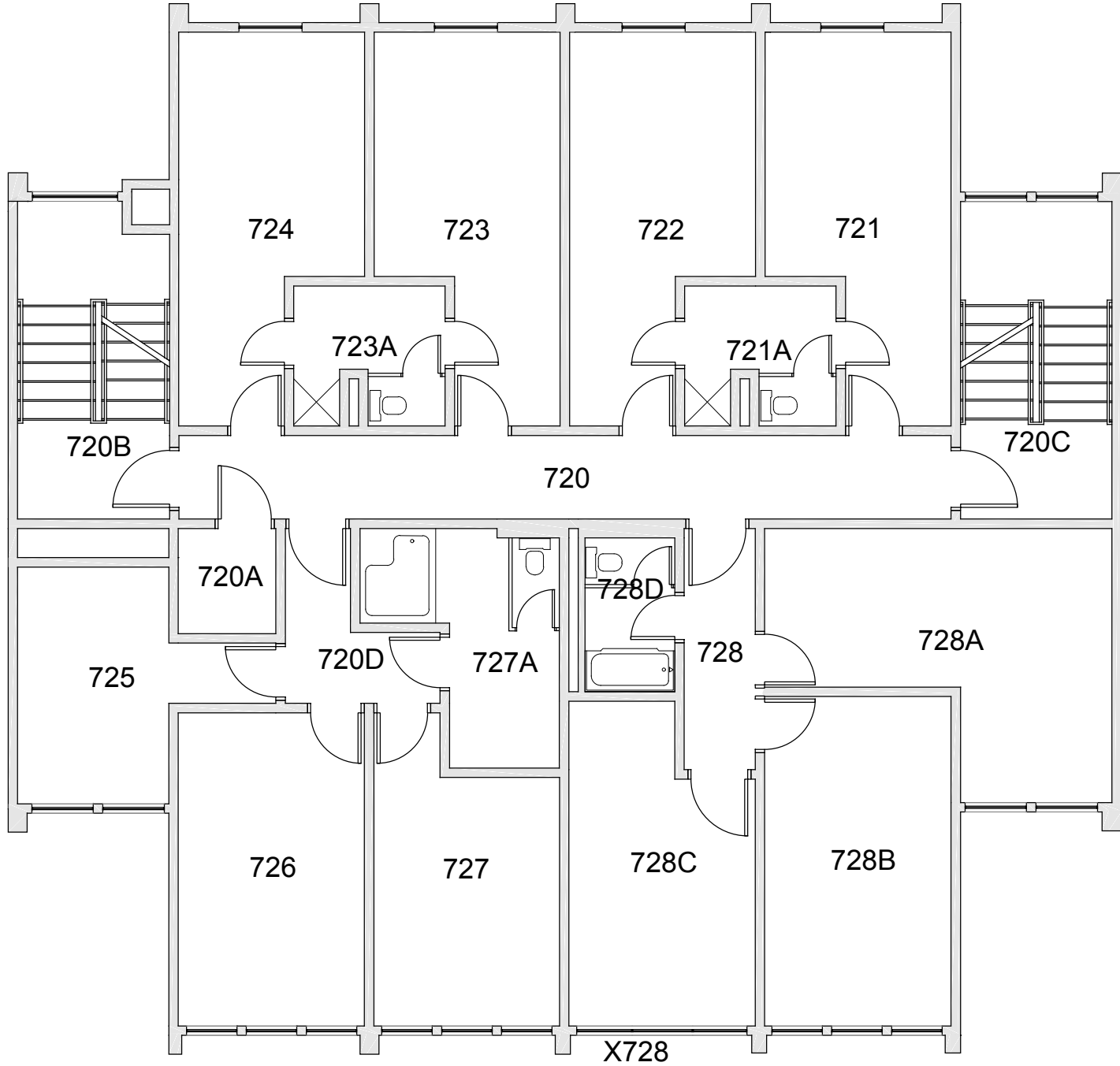


FAIRHAVEN TOWER 7
FLOOR 1

Last Drawing Revision: 02/15/2017

Last Sync With AIM: 02/09/2017

Building	FX07
Floor #	01



BASE FLOOR PLAN

Western Washington University (WWU) makes these documents available on an "as is" basis. All warranties and representations of any kind with regard to said documents are disclaimed, including the implied warranties of merchantability and fitness for a particular use. WWU does not warrant the documents against deficiencies of any kind.



TRUE NORTH

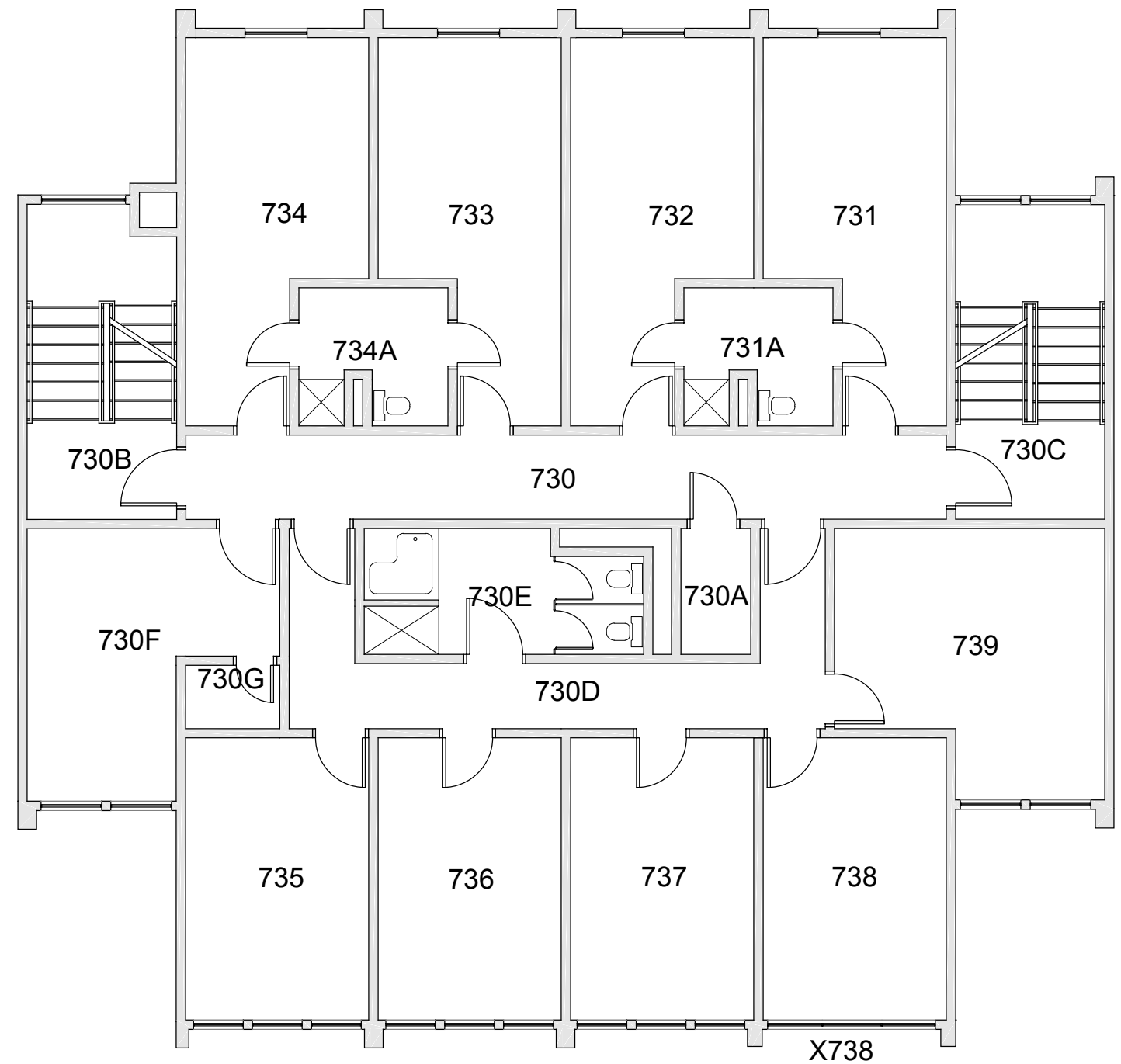


FAIRHAVEN TOWER 7
FLOOR 2

Last Drawing Revision: 02/15/2017

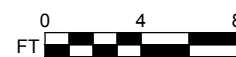
Last Sync With AIM: 02/09/2017

Building	FX07
Floor #	02



BASE FLOOR PLAN

Western Washington University (WWU) makes these documents available on an "as is" basis. All warranties and representations of any kind with regard to said documents are disclaimed, including the implied warranties of merchantability and fitness for a particular use. WWU does not warrant the documents against deficiencies of any kind.



TRUE NORTH

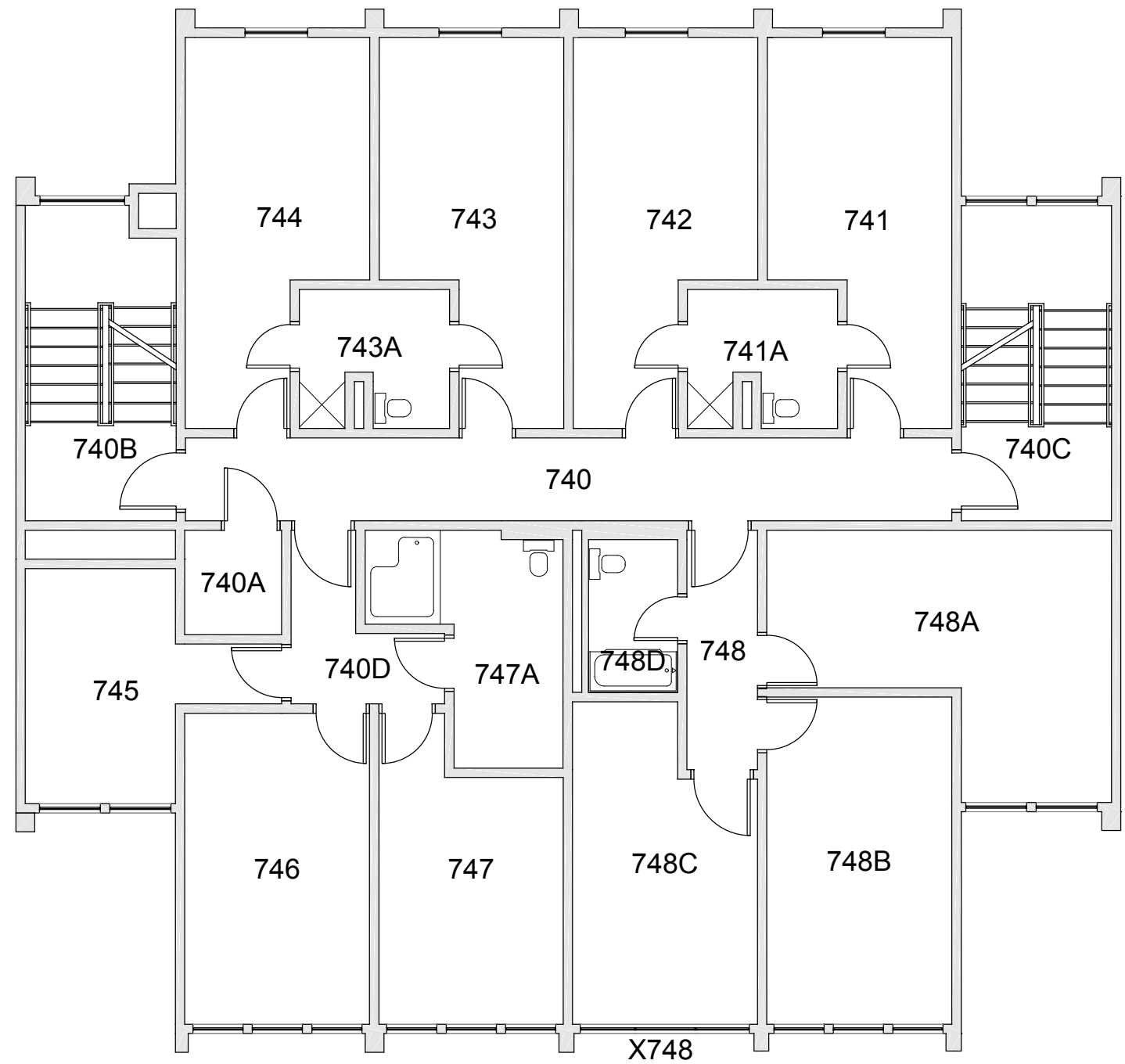


FAIRHAVEN TOWER 7
FLOOR 3

Last Drawing Revision: 02/15/2017

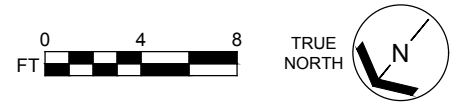
Last Sync With AIM: 02/09/2017

Building # **FX07**
Floor # **03**



BASE FLOOR PLAN

Western Washington University (WWU) makes these documents available on an "as is" basis. All warranties and representations of any kind with regard to said documents are disclaimed, including the implied warranties of merchantability and fitness for a particular use. WWU does not warrant the documents against deficiencies of any kind.



FAIRHAVEN TOWER 7	
FLOOR 4	
Last Drawing Revision: 02/15/2017	Last Sync With AIM: 02/09/2017

Building	FX07
Floor #	04