

**BASE FLOOR PLAN**

Western Washington University (WWU) makes these documents available on an "as is" basis. All warranties and representations of any kind with regard to said documents are disclaimed, including the implied warranties of merchantability and fitness for a particular use. WWU does not warrant the documents against deficiencies of any kind.



TRUE NORTH

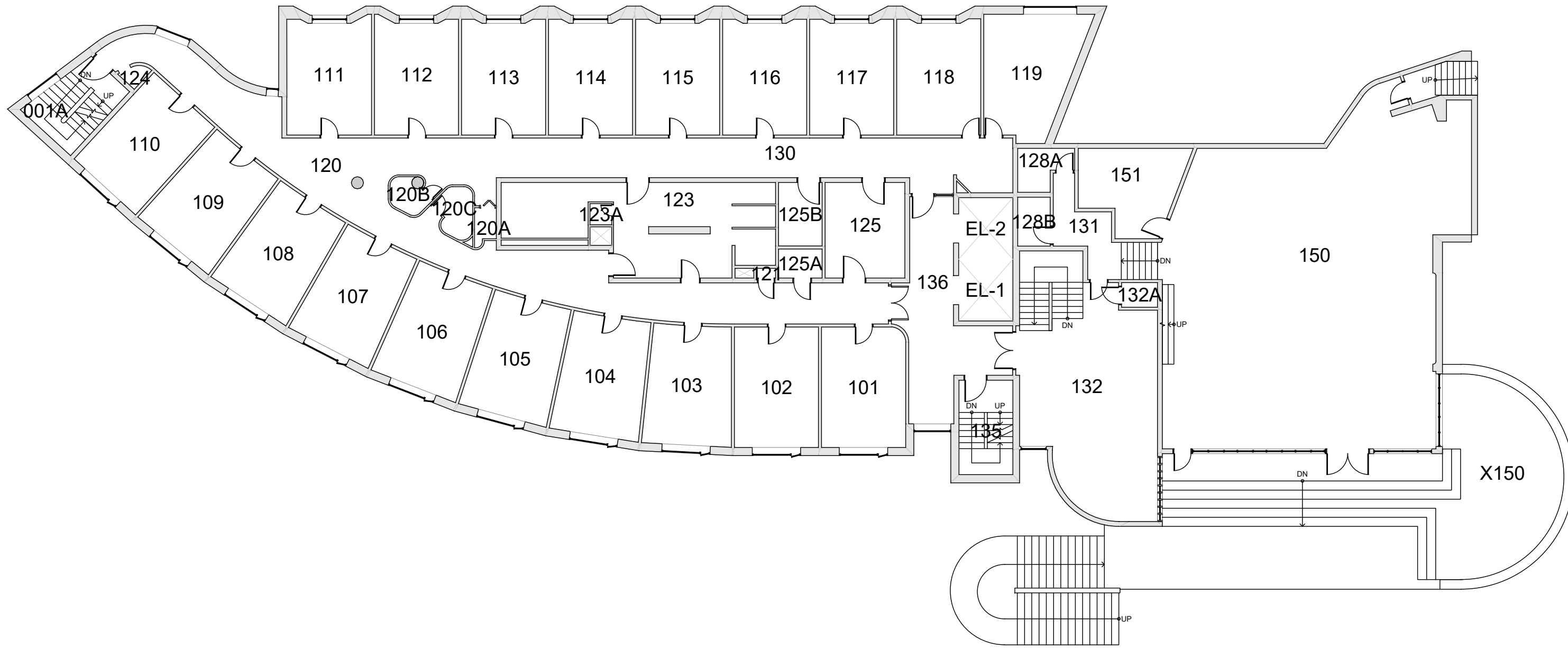


Last Drawing Revision: 07/29/2022

**MATHES HALL**  
BASEMENT

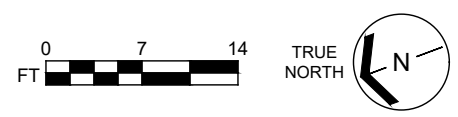
Last Sync With AIM: 07/29/2022

Building	<b>MA</b>
Floor #	<b>B</b>



**BASE FLOOR PLAN**

Western Washington University (WWU) makes these documents available on an "as is" basis. All warranties and representations of any kind with regard to said documents are disclaimed, including the implied warranties of merchantability and fitness for a particular use. WWU does not warrant the documents against deficiencies of any kind.

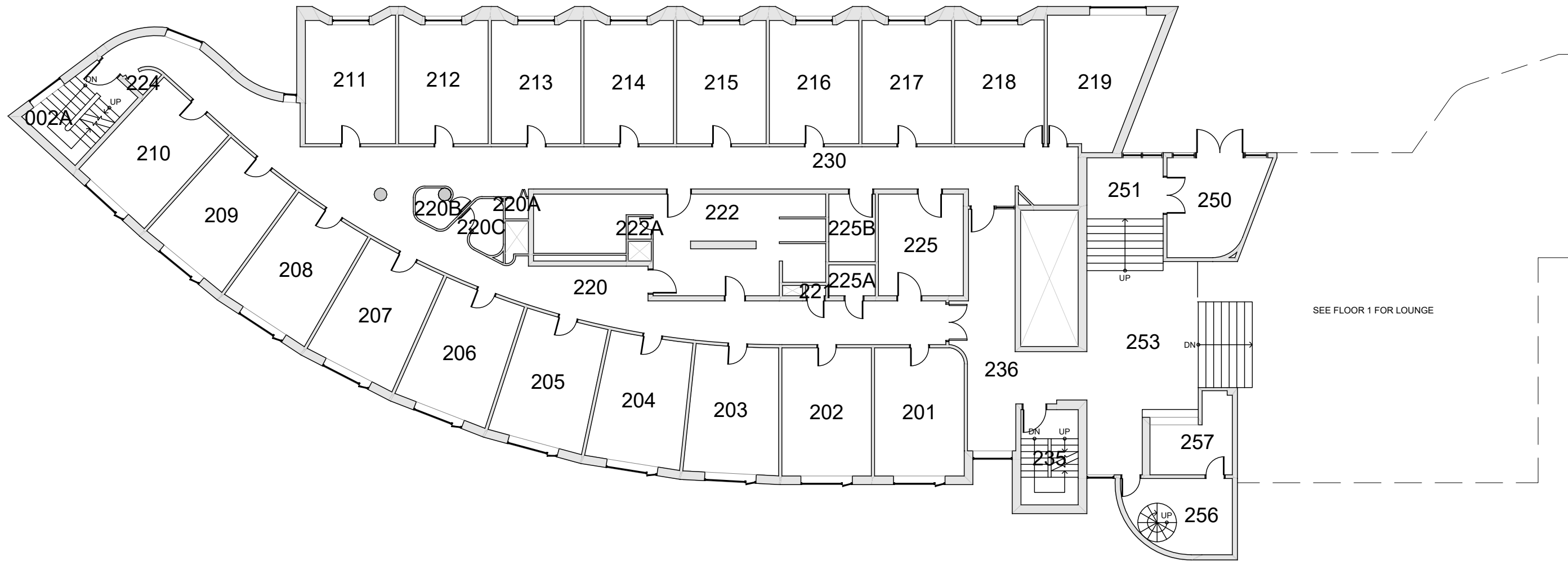


**MATHES HALL**  
FLOOR 1

Last Drawing Revision: 07/29/2022

Last Sync With AIM: 07/28/2022

Building	<b>MA</b>
Floor #	<b>1</b>



**BASE FLOOR PLAN**

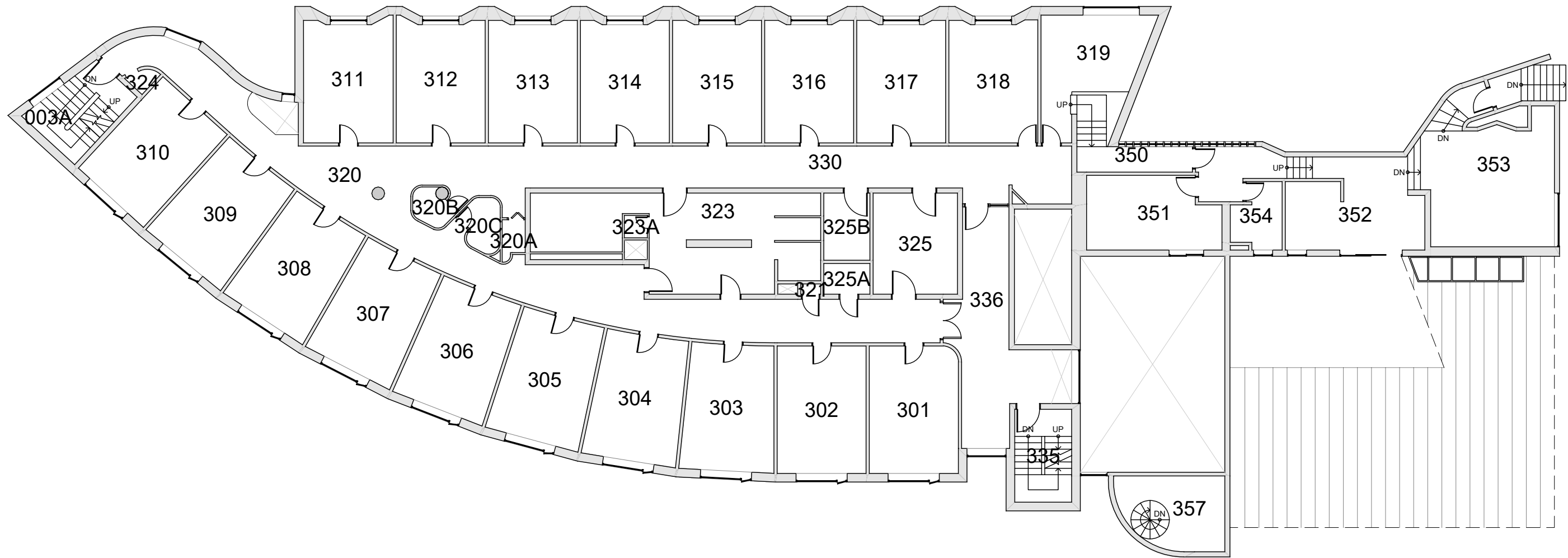
Western Washington University (WWU) makes these documents available on an "as is" basis. All warranties and representations of any kind with regard to said documents are disclaimed, including the implied warranties of merchantability and fitness for a particular use. WWU does not warrant the documents against deficiencies of any kind.



**MATHES HALL**  
FLOOR 2

Last Drawing Revision: 07/29/2022 Last Sync With AIM: 07/29/2022

Building	<b>MA</b>
Floor #	2



**BASE FLOOR PLAN**

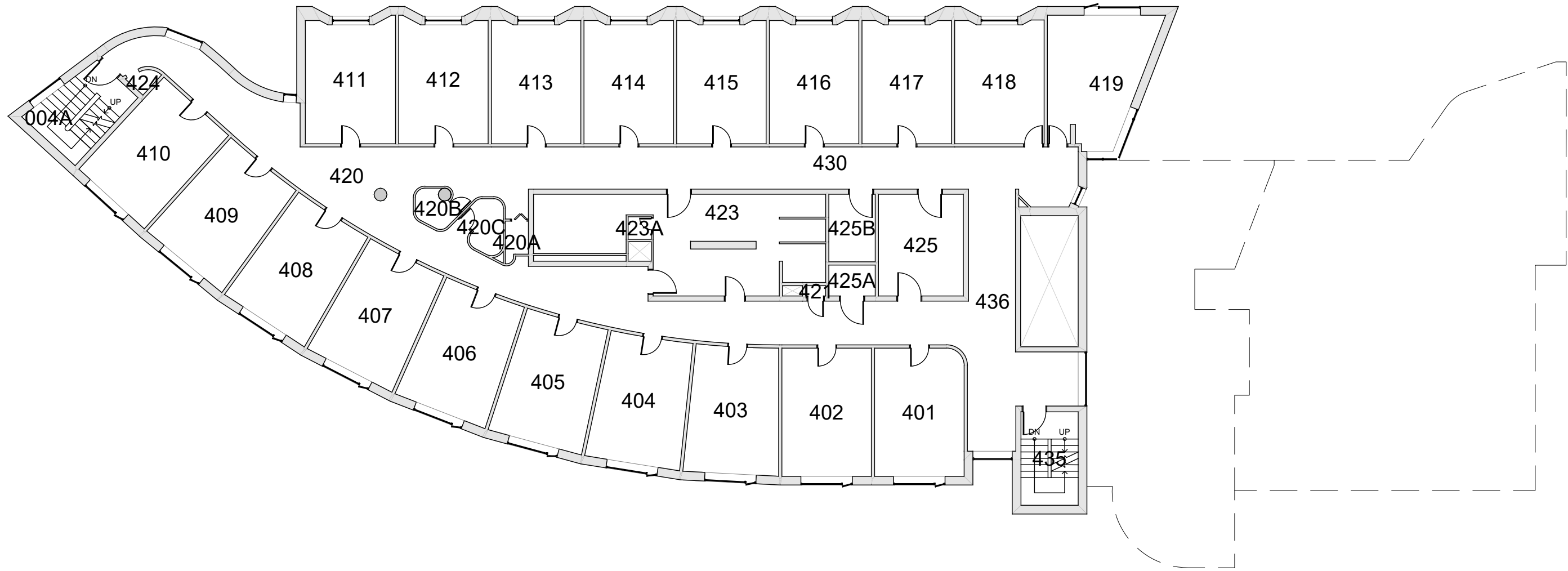
Western Washington University (WWU) makes these documents available on an "as is" basis. All warranties and representations of any kind with regard to said documents are disclaimed, including the implied warranties of merchantability and fitness for a particular use. WWU does not warrant the documents against deficiencies of any kind.



**MATHES HALL**  
FLOOR 3

Last Drawing Revision: 07/29/2022 Last Sync With AIM: 07/28/2022

Building <b>MA</b>
Floor # <b>3</b>



**BASE FLOOR PLAN**

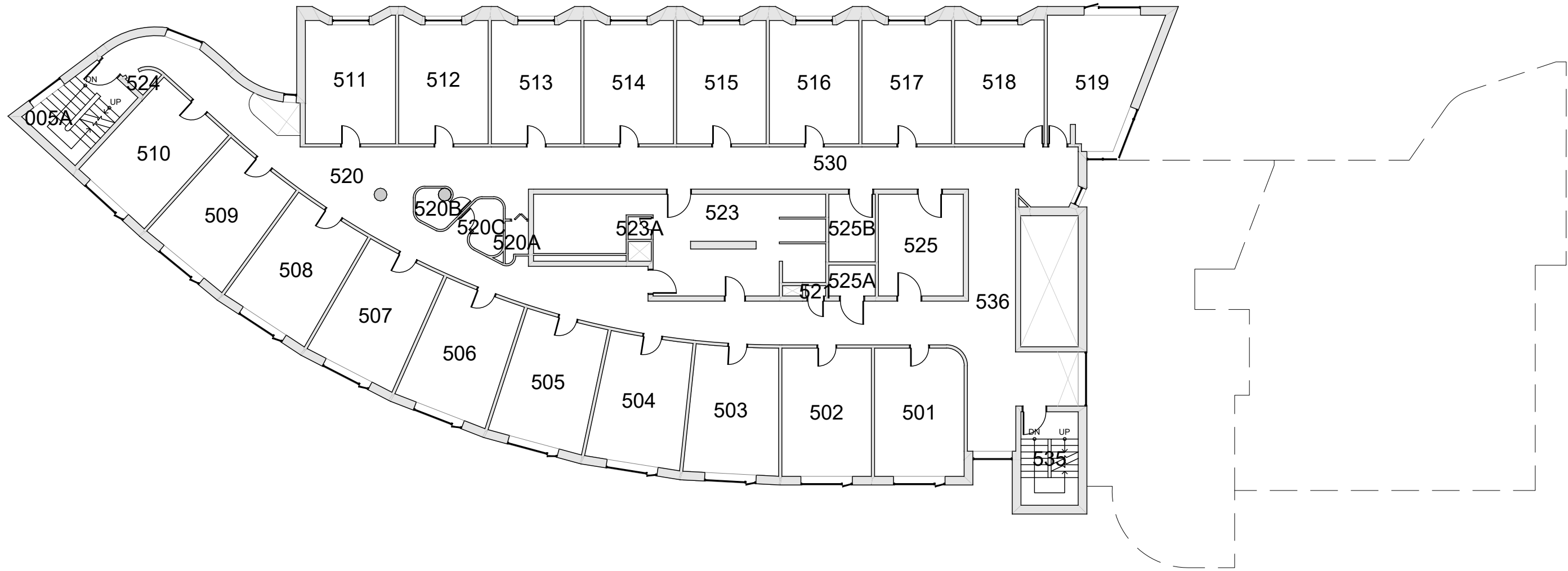
Western Washington University (WWU) makes these documents available on an "as is" basis. All warranties and representations of any kind with regard to said documents are disclaimed, including the implied warranties of merchantability and fitness for a particular use. WWU does not warrant the documents against deficiencies of any kind.



**MATHES HALL**  
FLOOR 4

Last Drawing Revision: 07/29/2022 Last Sync With AIM: 07/28/2022

Building <b>MA</b>
Floor # <b>4</b>



**BASE FLOOR PLAN**

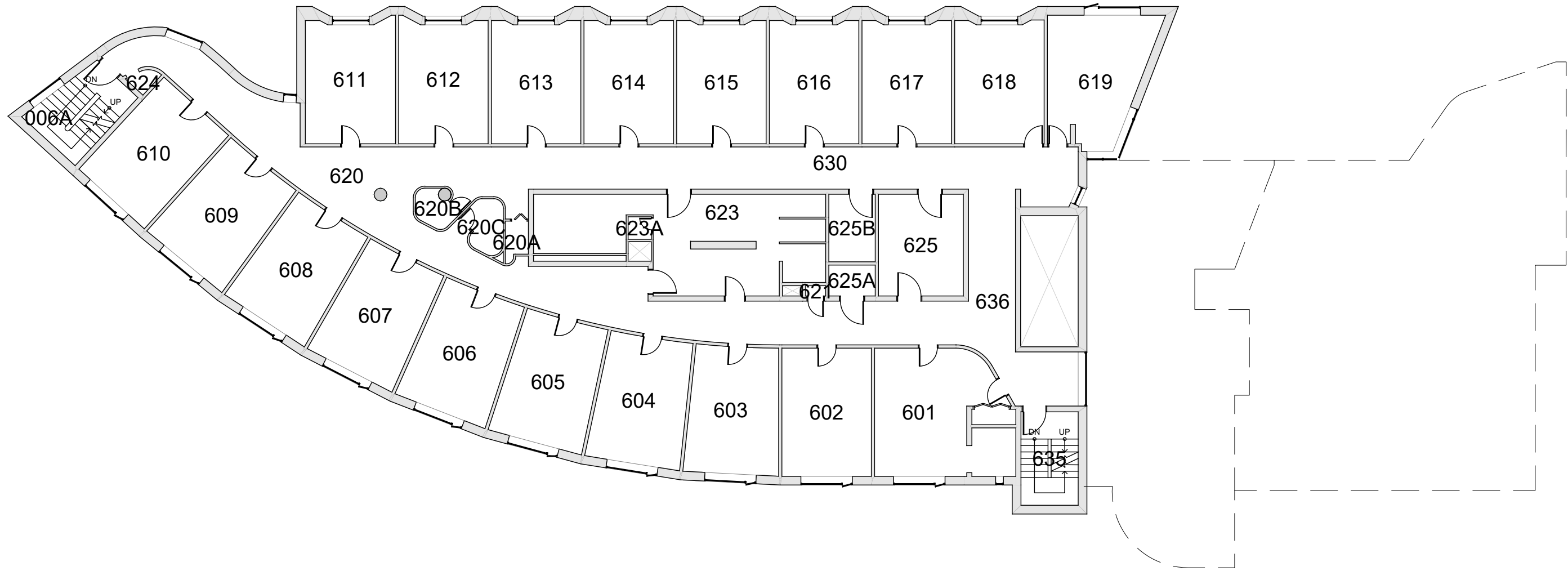
Western Washington University (WWU) makes these documents available on an "as is" basis. All warranties and representations of any kind with regard to said documents are disclaimed, including the implied warranties of merchantability and fitness for a particular use. WWU does not warrant the documents against deficiencies of any kind.



**MATHES HALL**  
FLOOR 5

Last Drawing Revision: 07/29/2022 Last Sync With AIM: 07/28/2022

Building	<b>MA</b>
Floor #	<b>5</b>



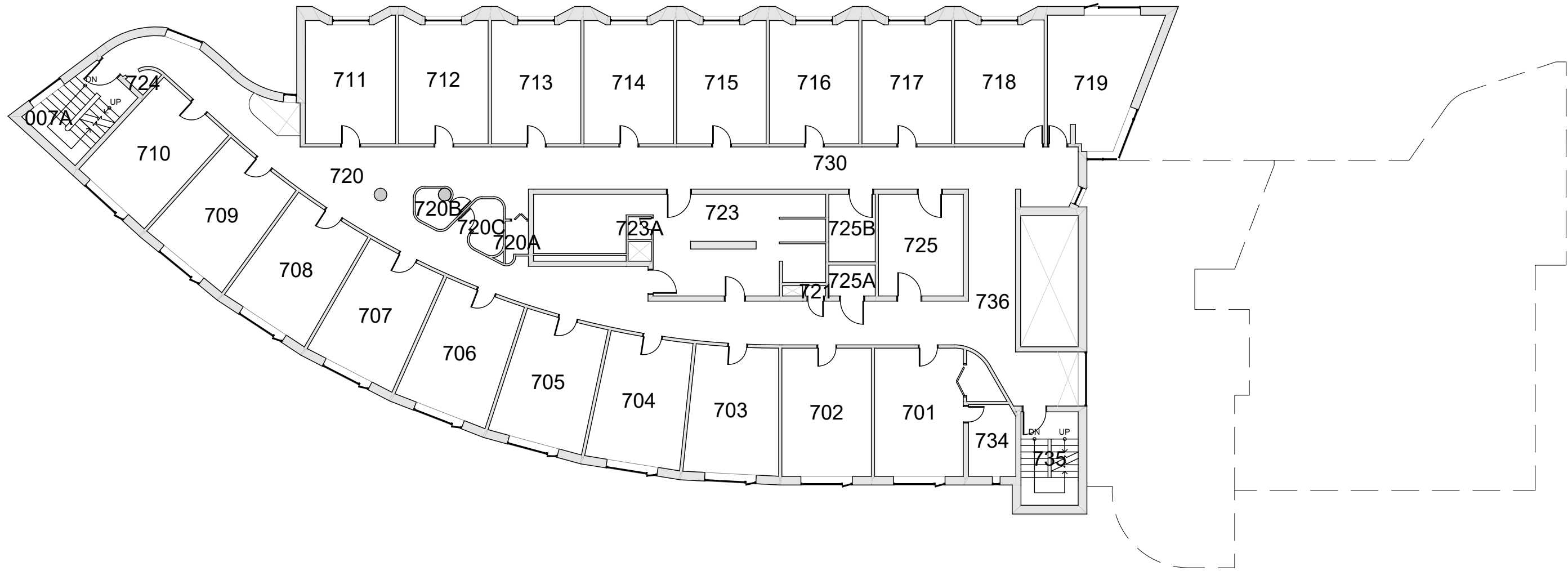
**BASE FLOOR PLAN**

Western Washington University (WWU) makes these documents available on an "as is" basis. All warranties and representations of any kind with regard to said documents are disclaimed, including the implied warranties of merchantability and fitness for a particular use. WWU does not warrant the documents against deficiencies of any kind.



<b>MATHES HALL</b> FLOOR 6		Last Sync With AIM: 07/28/2022
Last Drawing Revision: 07/29/2022		

Building	<b>MA</b>
Floor #	<b>6</b>



**BASE FLOOR PLAN**

Western Washington University (WWU) makes these documents available on an "as is" basis. All warranties and representations of any kind with regard to said documents are disclaimed, including the implied warranties of merchantability and fitness for a particular use. WWU does not warrant the documents against deficiencies of any kind.



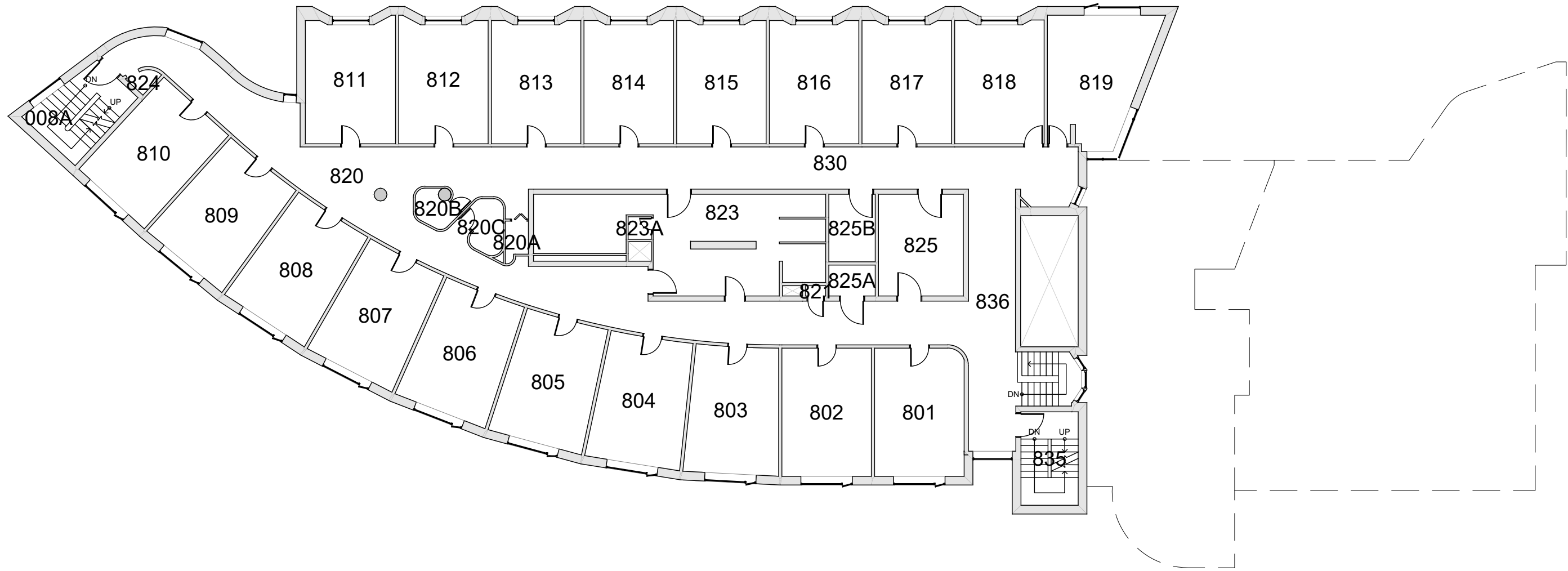
**MATHES HALL**  
FLOOR 7

Last Drawing Revision: 07/29/2022

Last Sync With AIM: 07/28/2022

Building <b>MA</b>
Floor # <b>7</b>





**BASE FLOOR PLAN**

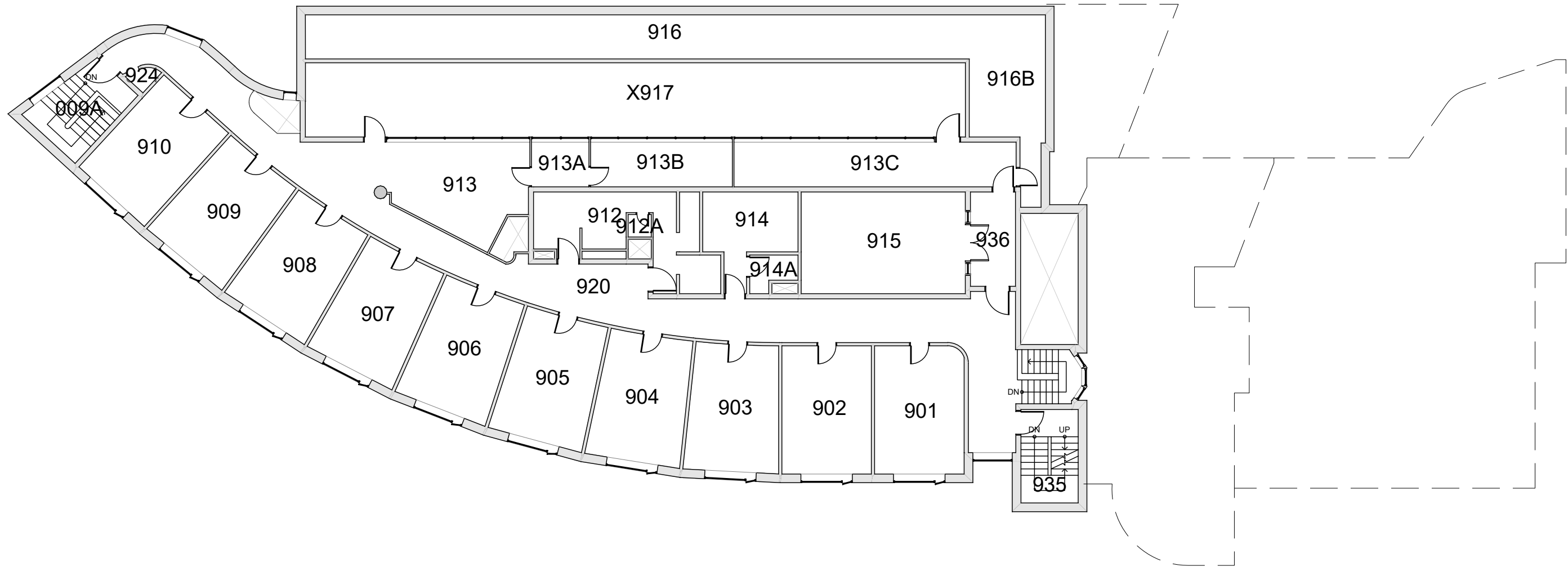
Western Washington University (WWU) makes these documents available on an "as is" basis. All warranties and representations of any kind with regard to said documents are disclaimed, including the implied warranties of merchantability and fitness for a particular use. WWU does not warrant the documents against deficiencies of any kind.



**MATHES HALL**  
FLOOR 8

Last Drawing Revision: 07/29/2022 Last Sync With AIM: 07/28/2022

Building <b>MA</b>
Floor # <b>8</b>



**BASE FLOOR PLAN**

Western Washington University (WWU) makes these documents available on an "as is" basis. All warranties and representations of any kind with regard to said documents are disclaimed, including the implied warranties of merchantability and fitness for a particular use. WWU does not warrant the documents against deficiencies of any kind.

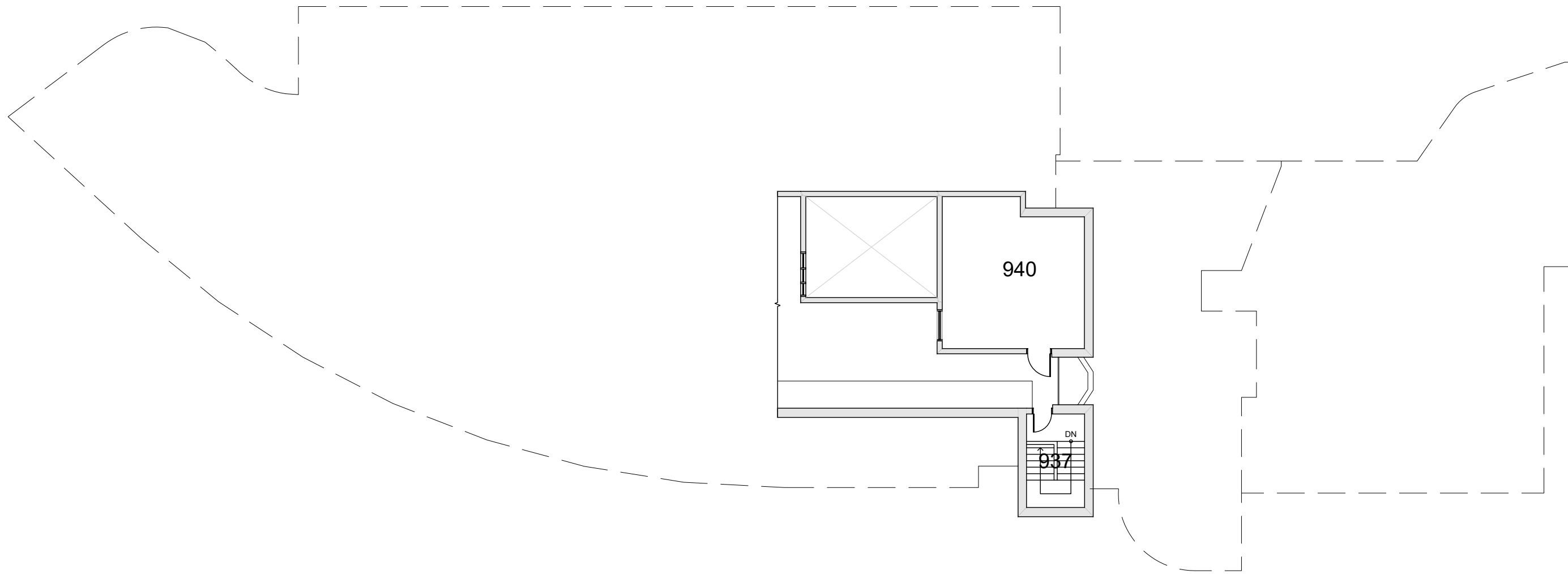


Last Drawing Revision: 07/29/2022

**MATHES HALL**  
FLOOR 9

Last Sync With AIM: 07/28/2022

Building	<b>MA</b>
Floor #	<b>9</b>



**BASE FLOOR PLAN**

Western Washington University (WWU) makes these documents available on an "as is" basis. All warranties and representations of any kind with regard to said documents are disclaimed, including the implied warranties of merchantability and fitness for a particular use. WWU does not warrant the documents against deficiencies of any kind.



<p><b>MATHES HALL</b> FLOOR 9 MEZZANINE</p>	
<p>Last Drawing Revision: 07/29/2022</p>	<p>Last Sync With AIM: 07/28/2022</p>

<p>Building <b>MA</b></p>
<p>Floor # <b>9M</b></p>