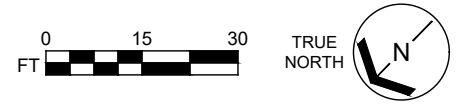


BASE FLOOR PLAN

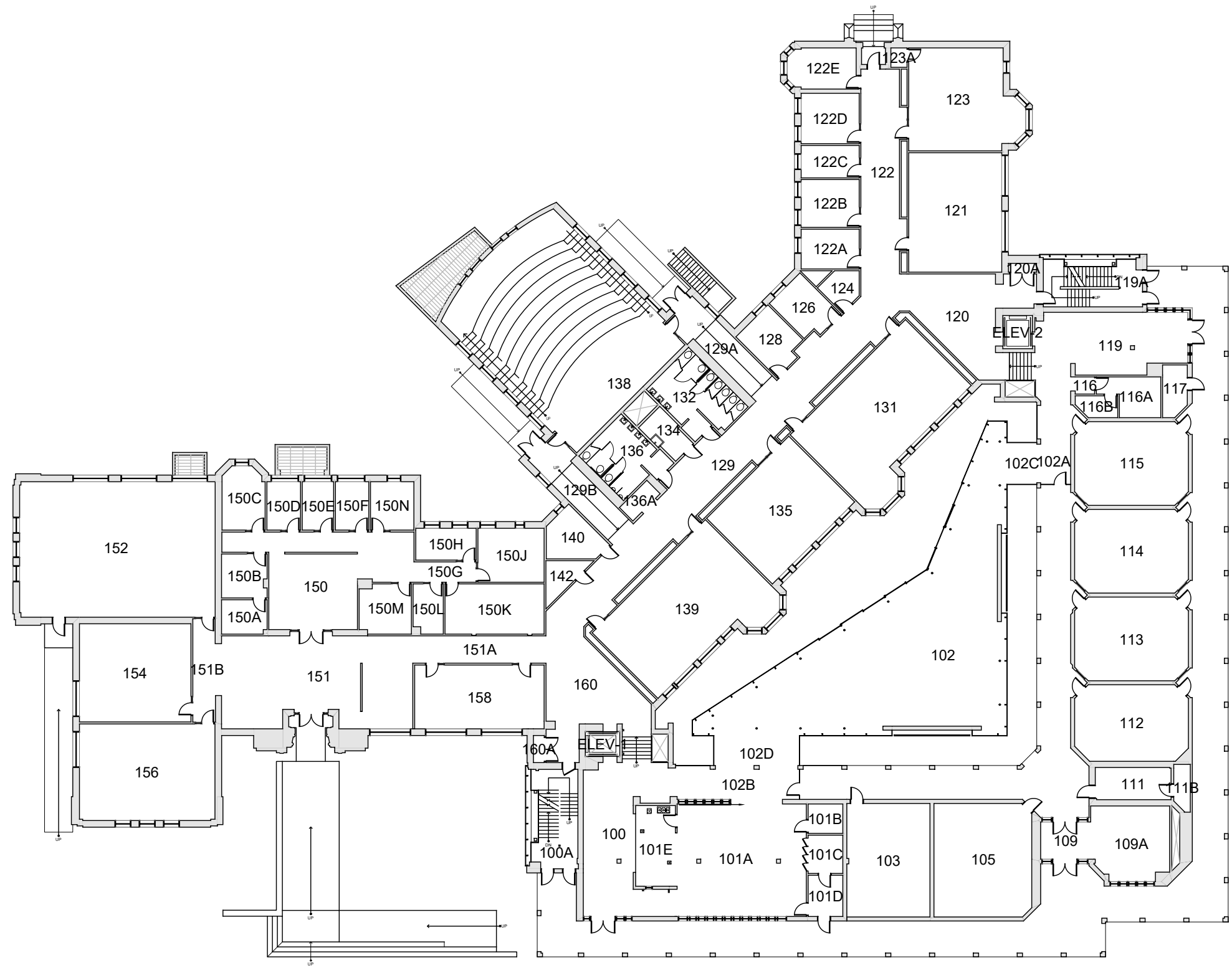
Western Washington University (WWU) makes these documents available on an "as is" basis. All warranties and representations of any kind with regard to said documents are disclaimed, including the implied warranties of merchantability and fitness for a particular use. WWU does not warrant the documents against deficiencies of any kind.



**MILLER HALL
BASEMENT**

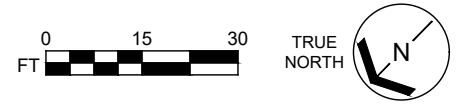
Last Drawing Revision: 03/08/2022 Last Sync With AIM: 03/08/2022

Building	MH
Floor #	B



BASE FLOOR PLAN

Western Washington University (WWU) makes these documents available on an "as is" basis. All warranties and representations of any kind with regard to said documents are disclaimed, including the implied warranties of merchantability and fitness for a particular use. WWU does not warrant the documents against deficiencies of any kind.



MILLER HALL
FLOOR 1

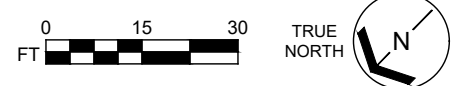
Last Drawing Revision: 03/08/2022 Last Sync With AIM: 03/08/2022

Building	MH
Floor #	1



BASE FLOOR PLAN

Western Washington University (WWU) makes these documents available on an "as is" basis. All warranties and representations of any kind with regard to said documents are disclaimed, including the implied warranties of merchantability and fitness for a particular use. WWU does not warrant the documents against deficiencies of any kind.

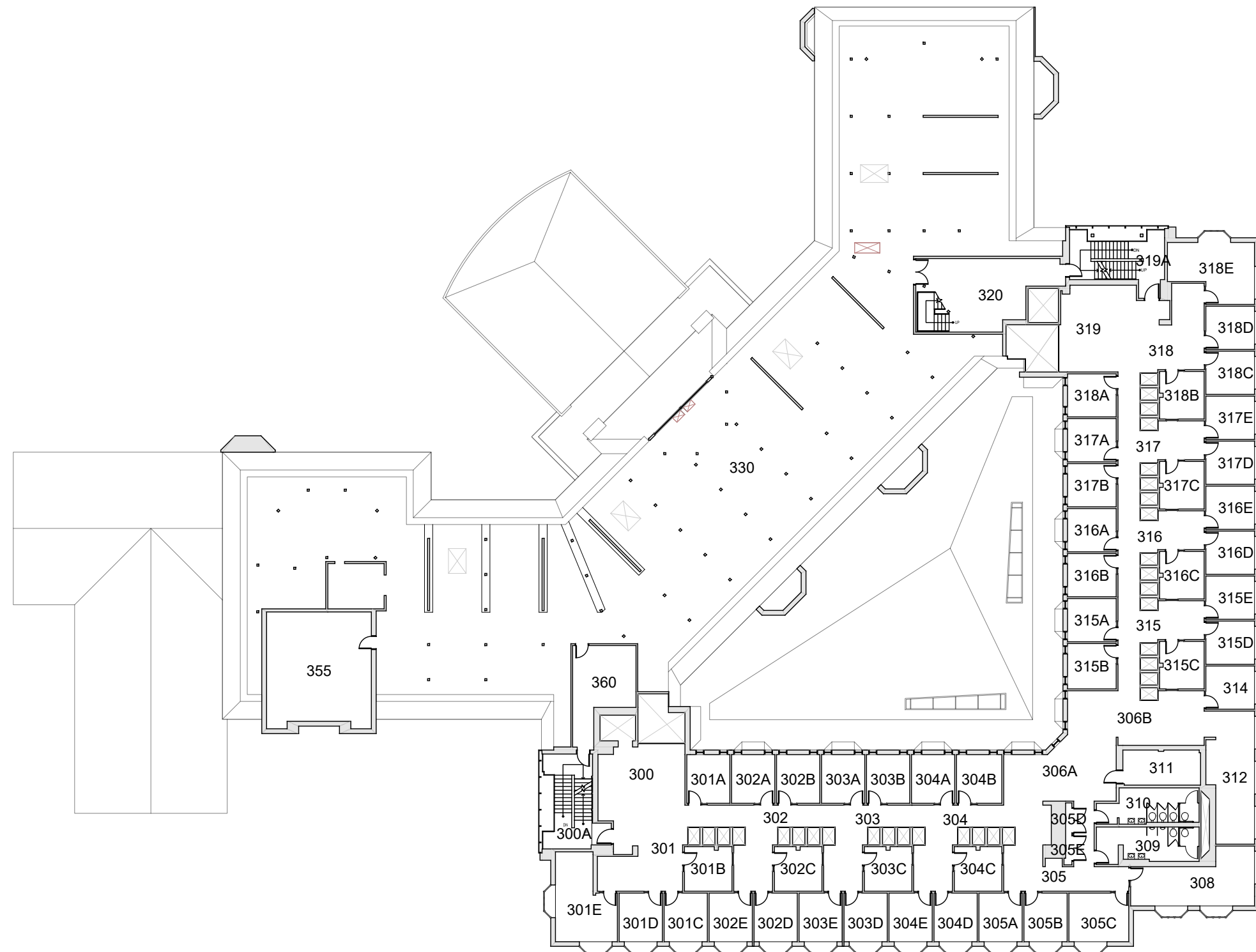


MILLER HALL
FLOOR 2

Last Drawing Revision: 03/08/2022

Last Sync With AIM: 03/08/2022

Building	MH
Floor #	2



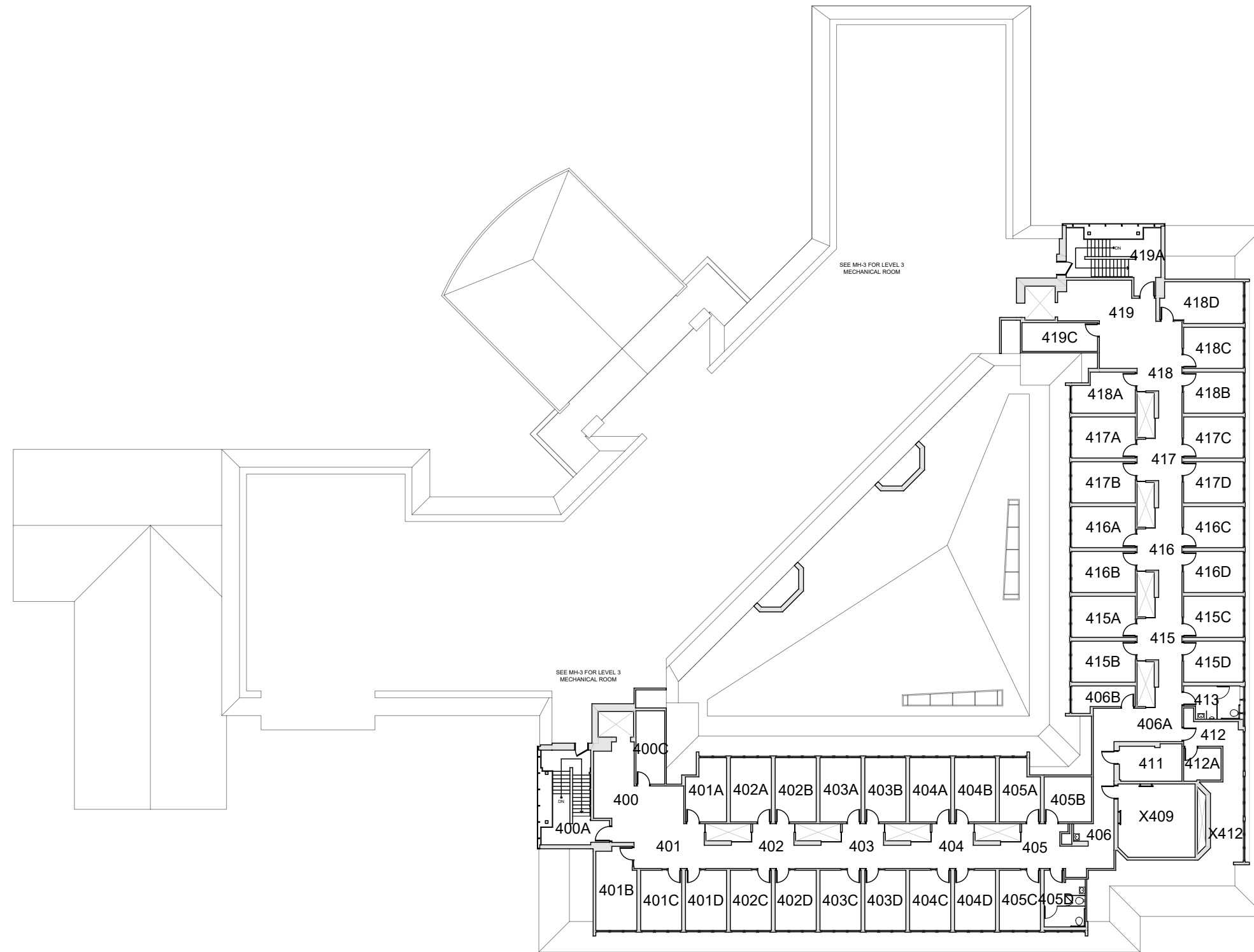
BASE FLOOR PLAN

Western Washington University (WWU) makes these documents available on an "as is" basis. All warranties and representations of any kind with regard to said documents are disclaimed, including the implied warranties of merchantability and fitness for a particular use. WWU does not warrant the documents against deficiencies of any kind.



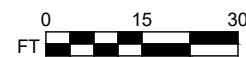
<p>MILLER HALL FLOOR 3</p>	<p>Last Sync With AIM: 03/08/2022</p>
<p>Last Drawing Revision: 03/08/2022</p>	

<p>Building MH</p>
<p>Floor # 3</p>



BASE FLOOR PLAN

Western Washington University (WWU) makes these documents available on an "as is" basis. All warranties and representations of any kind with regard to said documents are disclaimed, including the implied warranties of merchantability and fitness for a particular use. WWU does not warrant the documents against deficiencies of any kind.



TRUE NORTH



MILLER HALL
FLOOR 4

Last Drawing Revision: 03/08/2022

Last Sync With AIM: 03/08/2022

Building	MH
Floor #	4