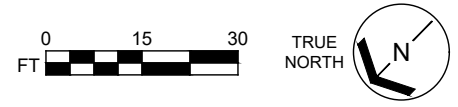


**BASE FLOOR PLAN**

Western Washington University (WWU) makes these documents available on an "as is" basis. All warranties and representations of any kind with regard to said documents are disclaimed, including the implied warranties of merchantability and fitness for a particular use. WWU does not warrant the documents against deficiencies of any kind.

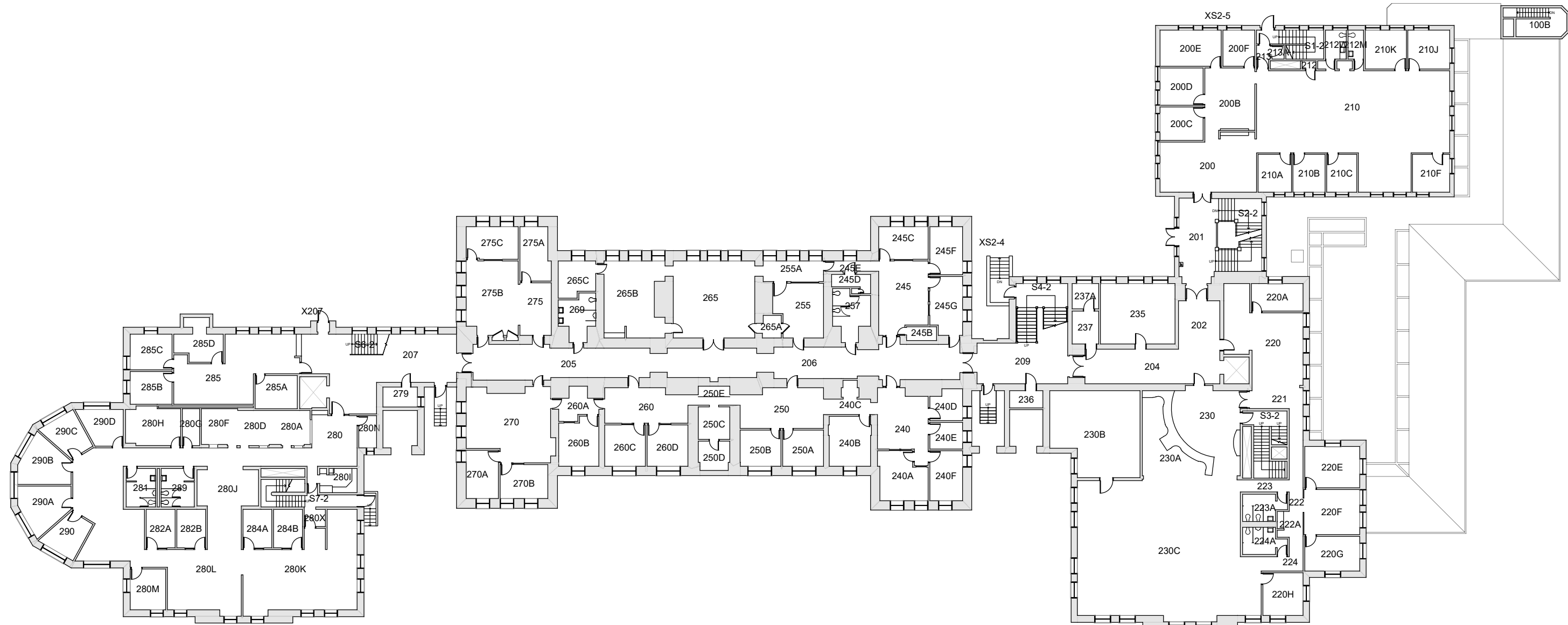


**OLD MAIN**  
FLOOR 1

Last Drawing Revision: 05/27/2022

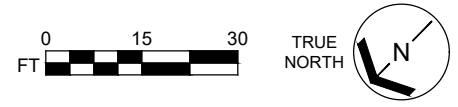
Last Sync With AIM: 05/27/2022

Building	<b>OM</b>
Floor #	<b>1</b>



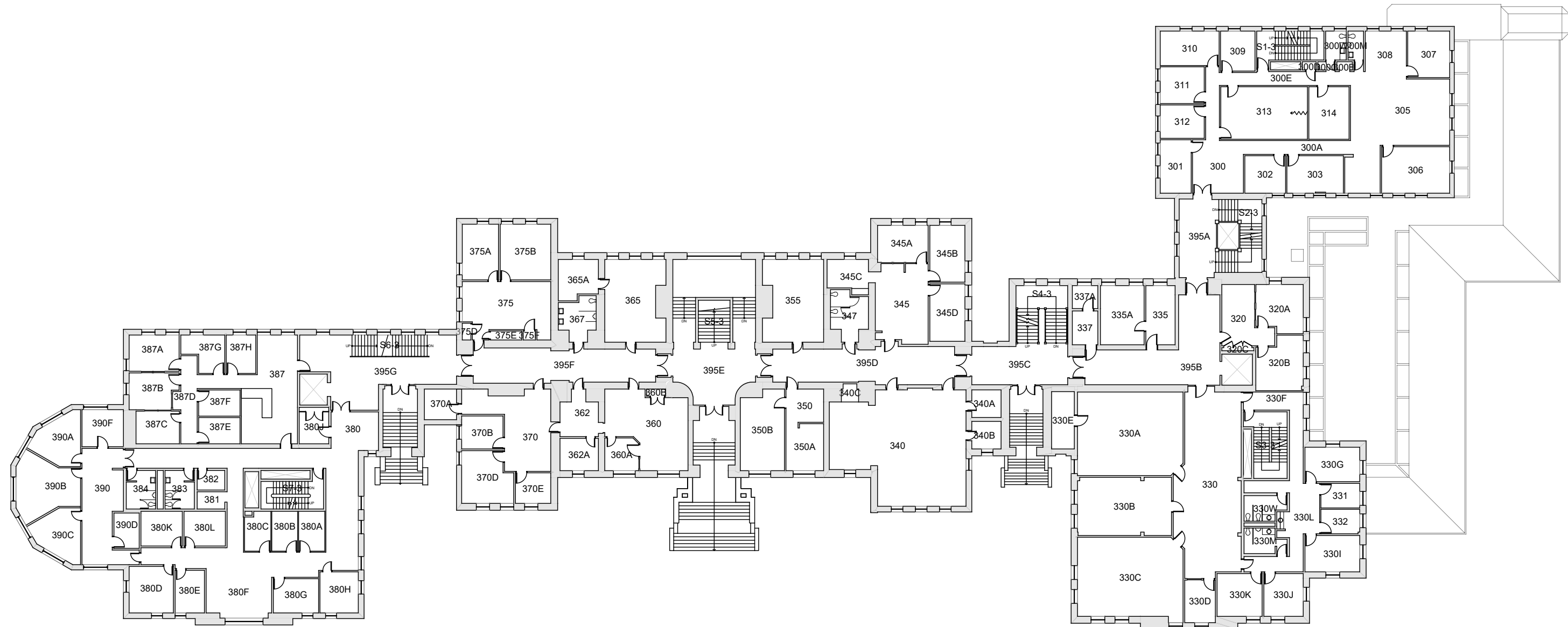
# BASE FLOOR PLAN

Western Washington University (WWU) makes these documents available on an "as is" basis. All warranties and representations of any kind with regard to said documents are disclaimed, including the implied warranties of merchantability and fitness for a particular use. WWU does not warrant the documents against deficiencies of any kind.



<h2>OLD MAIN</h2> <p>FLOOR 2</p>	<p>Last Sync With AIM: 05/27/2022</p>
<p>Last Drawing Revision: 04/18/2023</p>	

Building	<b>OM</b>
Floor #	2



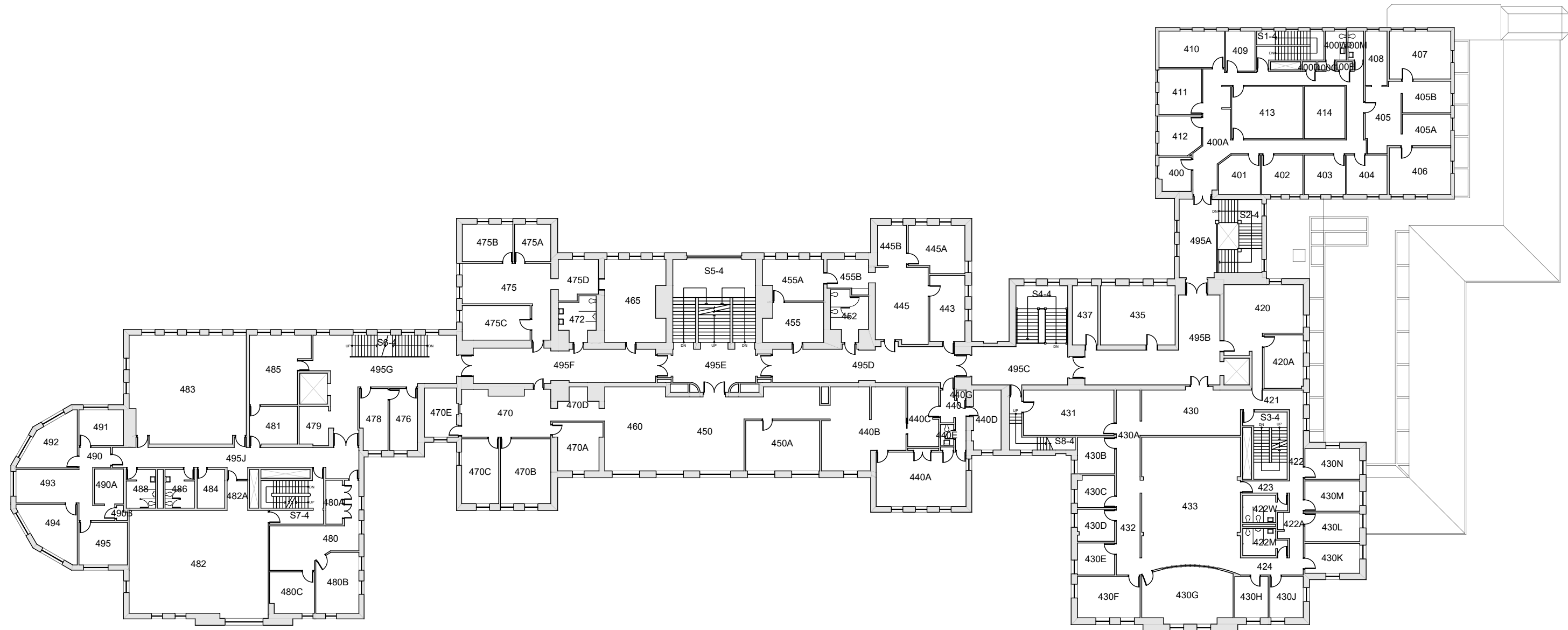
**BASE FLOOR PLAN**

Western Washington University (WWU) makes these documents available on an "as is" basis. All warranties and representations of any kind with regard to said documents are disclaimed, including the implied warranties of merchantability and fitness for a particular use. WWU does not warrant the documents against deficiencies of any kind.



<p><b>OLD MAIN</b> FLOOR 3</p>	<p>Last Sync With AIM: 07/21/2023</p>
<p>Last Drawing Revision: 07/21/2023</p>	

<p>Building <b>OM</b></p>
<p>Floor # <b>3</b></p>



# BASE FLOOR PLAN

Western Washington University (WWU) makes these documents available on an "as is" basis. All warranties and representations of any kind with regard to said documents are disclaimed, including the implied warranties of merchantability and fitness for a particular use. WWU does not warrant the documents against deficiencies of any kind.



TRUE NORTH



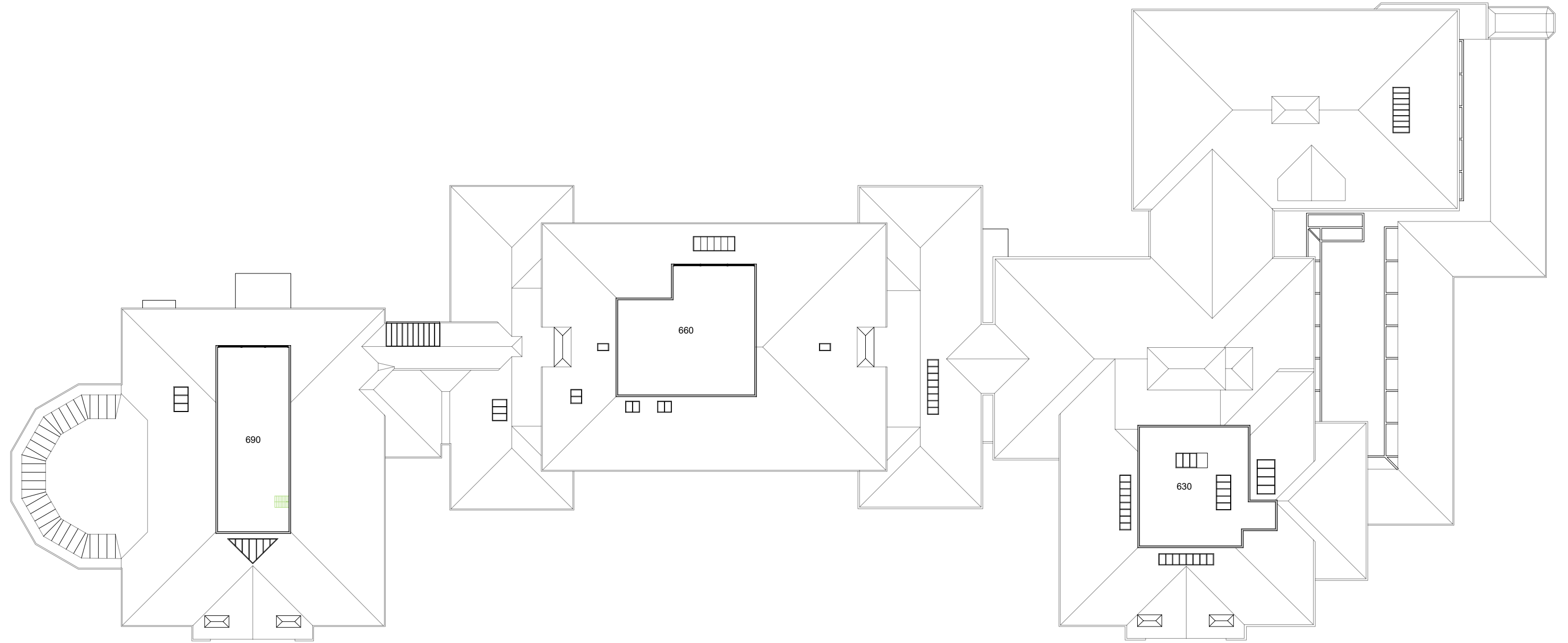
## OLD MAIN FLOOR 4

Last Drawing Revision: 05/27/2022

Last Sync With AIM: 05/27/2022

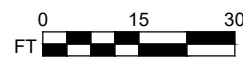
Building	OM
Floor #	4





**BASE FLOOR PLAN**

Western Washington University (WWU) makes these documents available on an "as is" basis. All warranties and representations of any kind with regard to said documents are disclaimed, including the implied warranties of merchantability and fitness for a particular use. WWU does not warrant the documents against deficiencies of any kind.



TRUE NORTH



Last Drawing Revision: 05/27/2022

**OLD MAIN**  
ATTIC

Last Sync With AIM: 05/27/2022

Building	<b>OM</b>
Floor #	<b>6</b>